



Southwest Safe

On-campus classes start
August 18, 2020

Classroom

- Face-to-face, online full-term, and online mini-term courses available
- Limited number in face-to-face classes to facilitate social distancing
- Face coverings in areas where social distancing is difficult
- Routine & frequent disinfecting schedule

Campus

- Daily signs and symptoms screenings required for all students, faculty, staff, and visitors
- Faculty, staff, and students must self-report if Covid-19 positive

Residence Halls

- Common areas will be closed
- Residents are to self-report symptom development to the head resident
- If required to isolate or quarantine, residents must do so off campus
- Wash hands frequently
- Wear masks in all areas except room
- Residents responsible for disinfecting own rooms

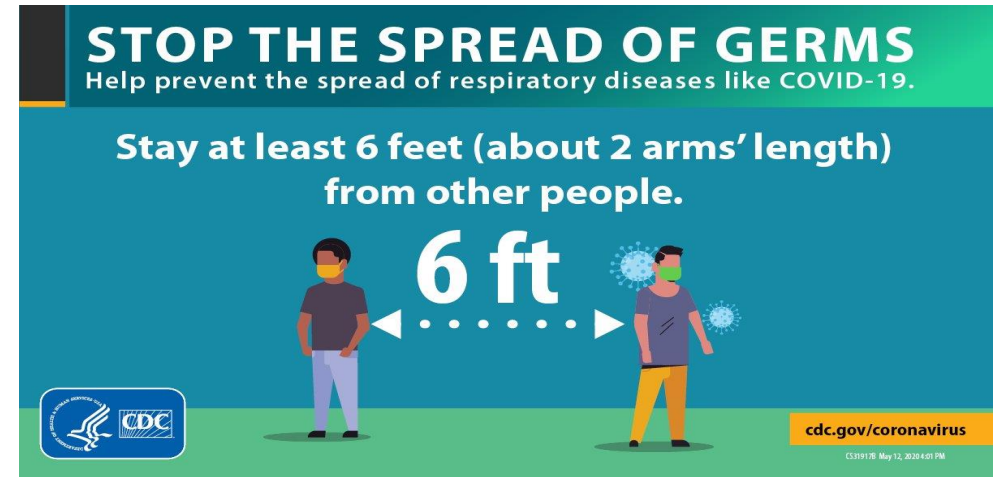
Cafeteria and Grill

- No buffets fall 2020
- Students are encouraged to take-out
- Tables arranged to promote social distancing with limited seating



Use of Cloth Face Coverings Help
Slow the Spread of COVID-19

For additional information, visit www.smcc.edu or call 601-276-2000



Health and Safety

All Covid-19 information will be regularly updated and distributed via SMCC campus email and SMCC Social Media

