



SOUTHWEST

MISSISSIPPI COMMUNITY COLLEGE

FACULTY HANDBOOK

July 2024

Summit, Mississippi

TABLE OF CONTENTS

SECTION 1 – INTRODUCTION.....	6
PRESIDENT’S MESSAGE	6
MISSION.....	7
Mission Statement.....	7
SECTION 2 -- ORGANIZATION AND ADMINISTRATION	8
STANDING COMMITTEES.....	16
SECTION 3 – PERSONNEL.....	20
Absence.....	21
Academic Freedom.....	21
Assignment of Grades.....	21
Communications	21
Calendars/Newsletters	21
Campus Mail.....	21
Information Technology Acceptable Use Policy.....	22
Institutional Publications.....	23
Telephone Use	23
Each faculty office is equipped with a telephone to be used primarily for college business. Faculty may contact the college’s Information Technology department for assistance regarding the operation of college telephones.	23
Conflict of Interest	23
Contracts.....	23
Dress Code/Grooming Policy	23
Distance Learning	25
Liability Insurance.....	26
Non-Discrimination.....	26
Orientation of New Faculty	26
Professional Growth	27
Recruitment of Faculty.....	27
Retirement	27
Salary.....	28
Teaching Load	28
Faculty (Full-time)	28
Faculty (Part-time and Adjunct)	28
Tenure/Termination	29
Travel.....	29
Work Schedule and Office Hours for Faculty.....	29
Faculty (Full-time)	29
Faculty (Adjunct)	30
Online, evening, and online dual enrollment.....	30
ADMINISTRATION	31
President.....	31
Vice-President for Academic Affairs	31
Vice-President for Career and Technical Education	32
Vice-President for Student Affairs	33
Vice-President for Financial Affairs.....	33
Vice-President for Admissions/Registrar.....	34
Vice-President for Physical Resources	35
Associate Vice-President for Nursing	36
Division Chairs.....	37
Faculty (Full-time)	37
Faculty (Adjunct and Part-time)	38
SECTION 4 -- EDUCATIONAL PROGRAM.....	40
ACADEMIC POLICIES.....	41
ACADEMIC FREEDOM.....	41
Academic Advising	41
Curriculum Change Procedure.....	42
Experimental Teaching Policy	42

Grading System.....	42
Quality Points.....	43
Student Attendance	43
Schedule Changes (Change of Registration).....	44
Syllabus Requirements.....	44
Withdrawals	45
Evaluations.....	46
Student Evaluation of Faculty	46
Faculty (division chairs/faculty) Evaluations	46
CLASSROOM POLICIES.....	47
Decorum	47
Visitors and Guests	47
SCHEDULE OF CLASS MEETINGS	47
Regular Schedule.....	47
Assembly Day Schedule	47
EVENING SCHOOL POLICY	48
SUMMER SCHOOL POLICY	48
GRADUATION.....	48
Application for Graduation	48
DISTANCE LEARNING.....	49
GENERATIVE ARTIFICIAL INTELLIGENCE.....	50
SECTION 5 – FINANCIAL SERVICES	51
EXTERNAL GRANTS/CONTRACTS	52
CAMPUS SOLICITATION AND FUND RAISING.....	52
SECTION 6 -- INSTITUTIONAL SUPPORT SERVICES.....	53
WORKFORCE CENTER	54
COUNSELING.....	54
FOOD SERVICES.....	54
Cafeteria	54
Grill	55
LIBRARY-LEARNING RESOURCES CENTER	56
Library Hours	56
Services.....	56
Library Use.....	56
Library Rules.....	56
Library Fines and Fees.....	57
SECURITY.....	57
STUDENTS.....	57
Due Process (Student Complaint Procedure)	57
Satisfactory Progress for Receiving Financial Aid.....	58
Health Services	58
Student Assistants	58
Student Recruitment	58
Student Dress Code	58
Student Organizations.....	59
Bear Trackers.....	59
Collegiate DECA	59
Phi Theta Kappa (PTK).....	59
Student Government Association (SGA).....	59
Student Nurses Organization (SNO)	59
Religious Groups	60
Baptist Student Union (BSU).....	60
Wesley Foundation	60
Student-Related Publications	60
<i>Student Handbook</i>	60
<i>The Pine Burr</i>	60
<i>Whispering Pines</i>	60
SECTION 7 -- PHYSICAL PLANT.....	61
PROPERTY AND MANAGEMENT CONTROL.....	62
Acquiring Property	62

Hazardous Materials.....	62
Use, Maintenance, and Security of Property	62
Inventory Control and Reporting	63
Disposition of Property.....	64
DISPOSITION OF SMCC SURPLUS EQUIPMENT	65
Acquiring Surplus Equipment	65
Disposal of College Equipment.....	65
SECTION 8 -- SPECIAL ACTIVITIES	66
GRADUATION.....	67
HOMECOMING.....	67
OBSERVATORY	67

FOREWORD

The success of the educational program at Southwest Mississippi Community College resides with the faculty, both individually and collectively. Individually, faculty members develop and implement course syllabi, conduct classes, and advise students. Collectively, each faculty member serves on one or more committees, and every faculty member has the opportunity for input into the budgeting and planning process.

Realizing the faculty's role in achieving the college's mission, the college strives to assist the faculty in meeting the needs of its constituents. Therefore, this document functions as one tool to provide users with current, relevant policies and procedures to ensure their continued growth as instructors, advisors, colleagues, and professionals.

Southwest Mississippi Community College does not discriminate on the basis of race, color, national origin, age, sex, religion, or disability in its programs, activities or employment practices. The following persons have been designated to handle inquiries and grievances regarding the non-discrimination policies: Mrs. Rhonda Gibson, Director of Disability Support Services, 601-276-3885; Mr. Blake Brewer, Vice President for Student Affairs and Title IX Coordinator, 601-276-3717; SMCC, 1156 College Drive, Summit, MS 39666.

SECTION 1 – INTRODUCTION

PRESIDENT’S MESSAGE

It is with great pleasure that I welcome you to Southwest Mississippi Community College. I feel that you will find our college to be a wonderful place to teach and to learn. The faculty, here at Southwest, has a reputation of being highly qualified for the challenges of the classroom. Also, our faculty members are known for showing a personal interest in each student and for being involved with student life, advising, recruiting, and retention of students. I encourage you to continue to grow professionally through extra course work, professional conferences, seminars, etc. You, as a member of the Southwest faculty, are vital to the mission and goals of our college. Please take seriously the responsibility that you are entrusted so that we will maintain the quality that has become expected from a Southwest employee. Please call upon me if I may ever be of assistance and I look forward to working closely with you.

J. Steven Bishop, President

MISSION

The driving force of the college is its mission statement. Evaluated yearly for continued relevancy, the statement functions as a guide for instructional programs and community service. It is imperative that faculty develop instructional plans and activities that support the mission statement.

Mission Statement

Southwest Mississippi Community College provides academic, career, and continuing education, meeting the diverse needs of the population at a reasonable cost. SMCC provides community services and promotes economic development through consultative and workforce training.

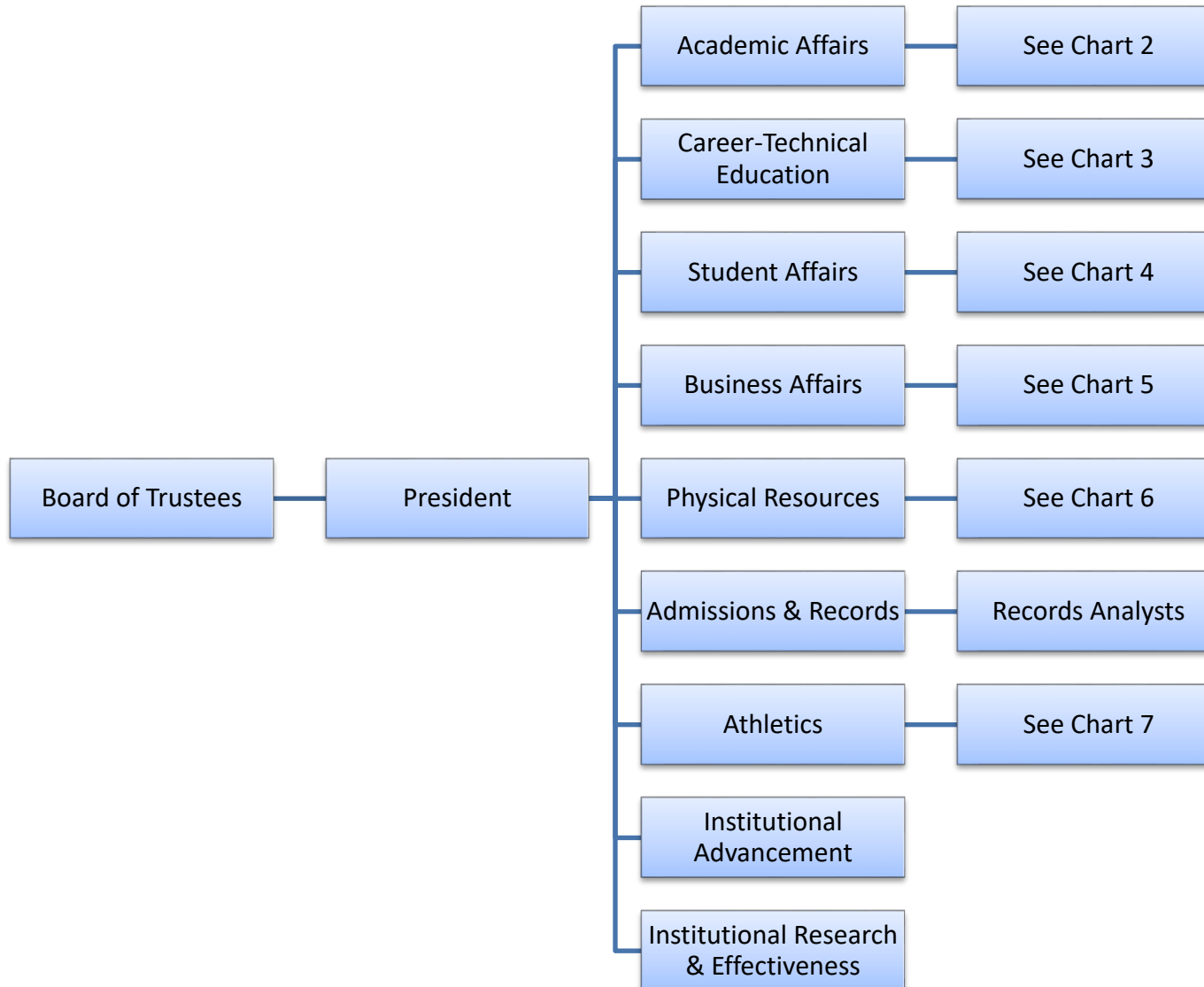
GOALS

1. To provide a two-year college transfer program applicable to a bachelor's degree.
2. To provide career and technical programs leading to employment or skills enhancement.
3. To provide programs enabling students to overcome specific deficiencies and achieve success.
4. To provide curricula, instruction, guidance, extracurricular activities, and other support services enhancing student development.
5. To provide facilities, technology, methodology, and staff sustaining an appropriate environment conducive to learning.
6. To provide lifelong learning opportunities.
7. To provide facilities and services supporting cultural, educational, and economic needs.
8. To publicize offerings of the institution and the opportunities it affords.

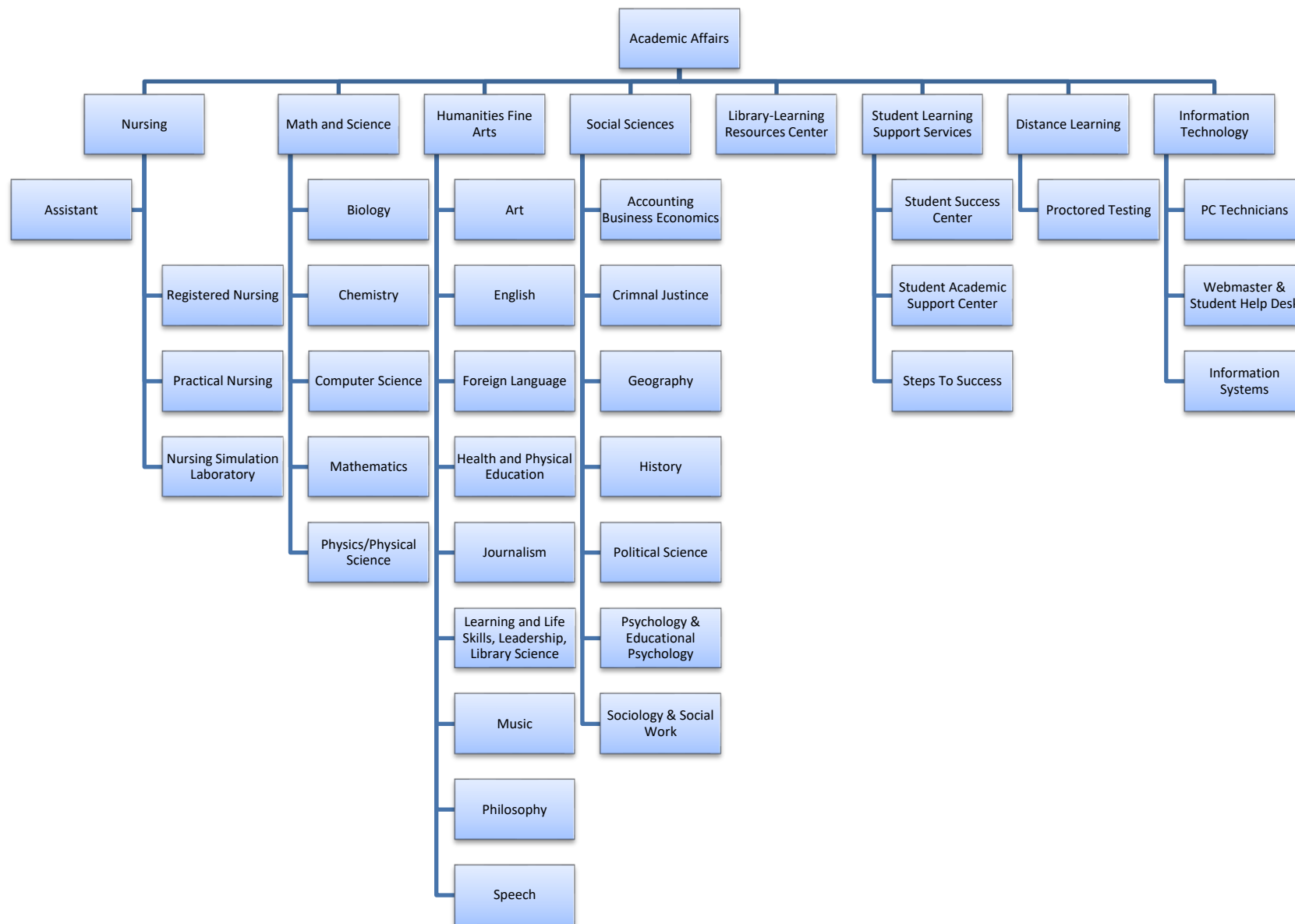
SECTION 2 -- ORGANIZATION AND ADMINISTRATION

To successfully achieve its mission and goals, Southwest Mississippi Community College functions in an organized manner. The organizational charts demonstrate the college's hierarchical organization and illustrate the faculty's location in its overall structure. Rather than departments, the college divides instructional programs into five divisions. Section 2 of the *Faculty Handbook* illustrates the faculty's position in the college structure and describes faculty's duties and responsibilities in standing committees.

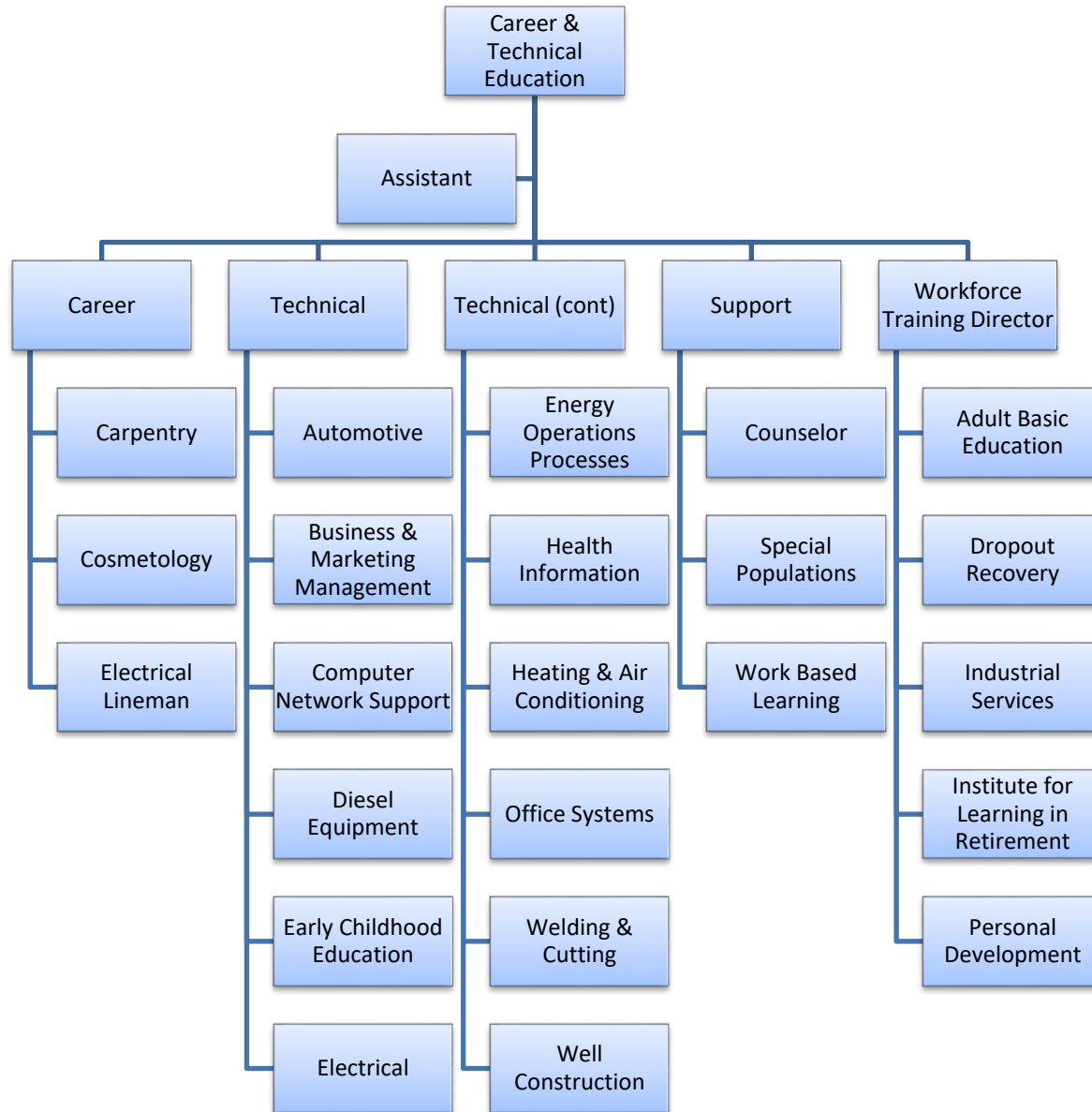
Southwest Mississippi Community College Organizational Charts



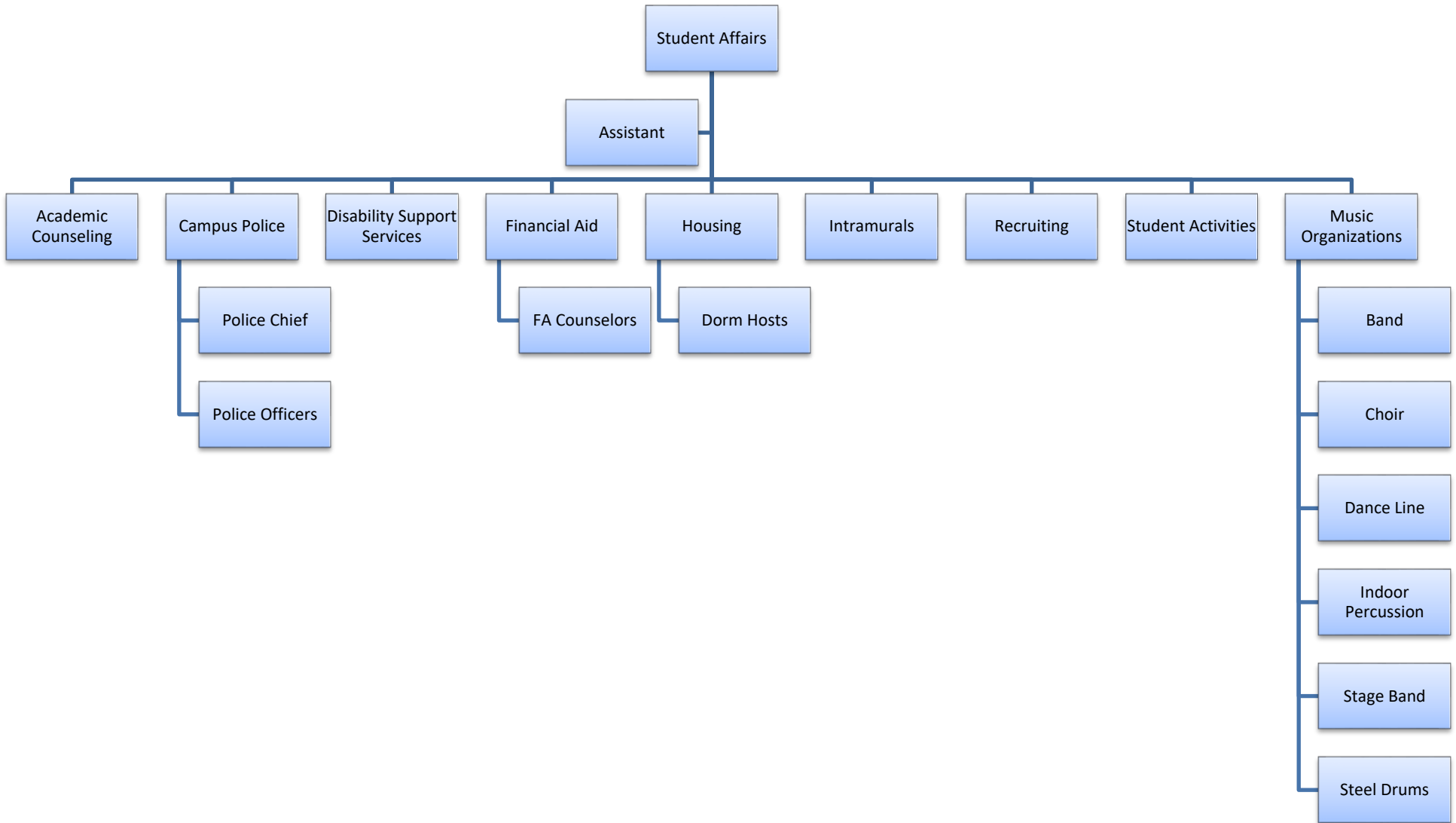
Organizational Chart 2



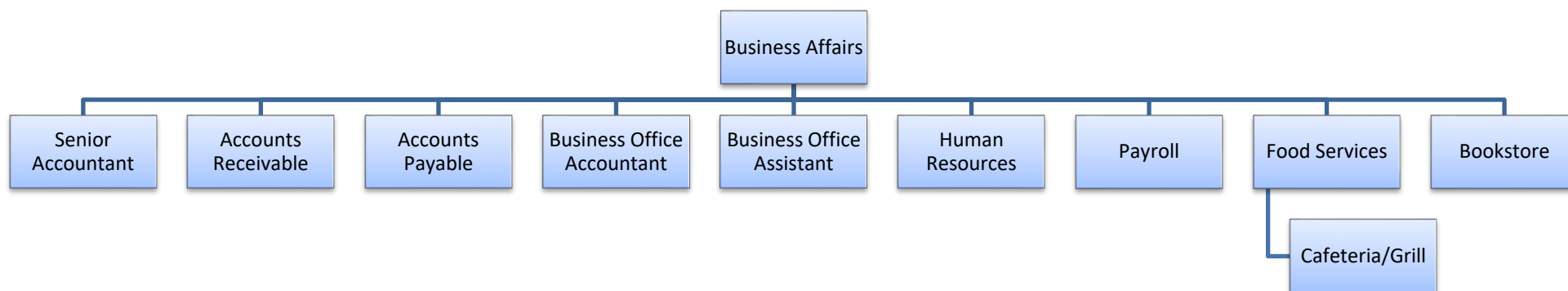
Organizational Chart 3



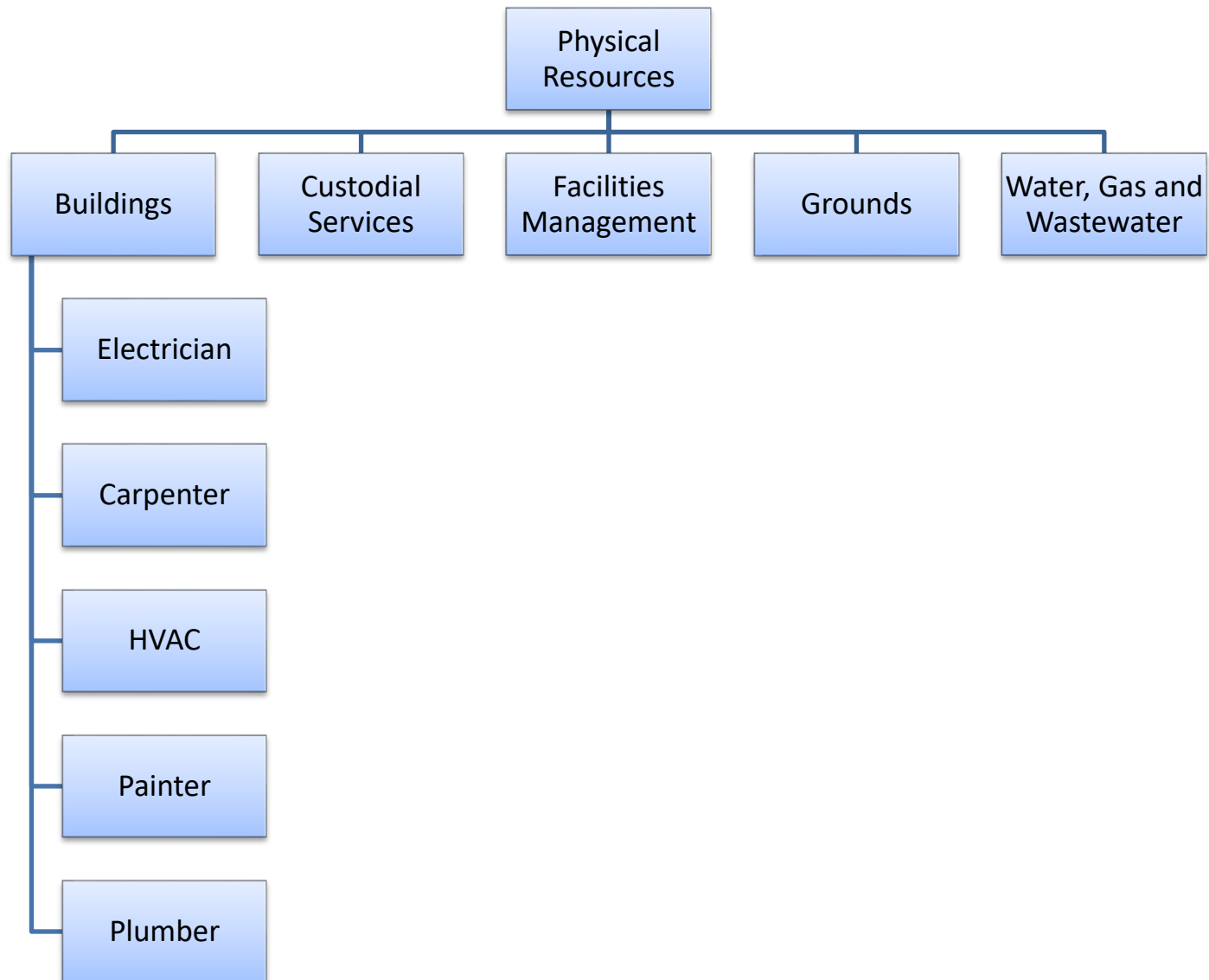
Organizational Chart 4



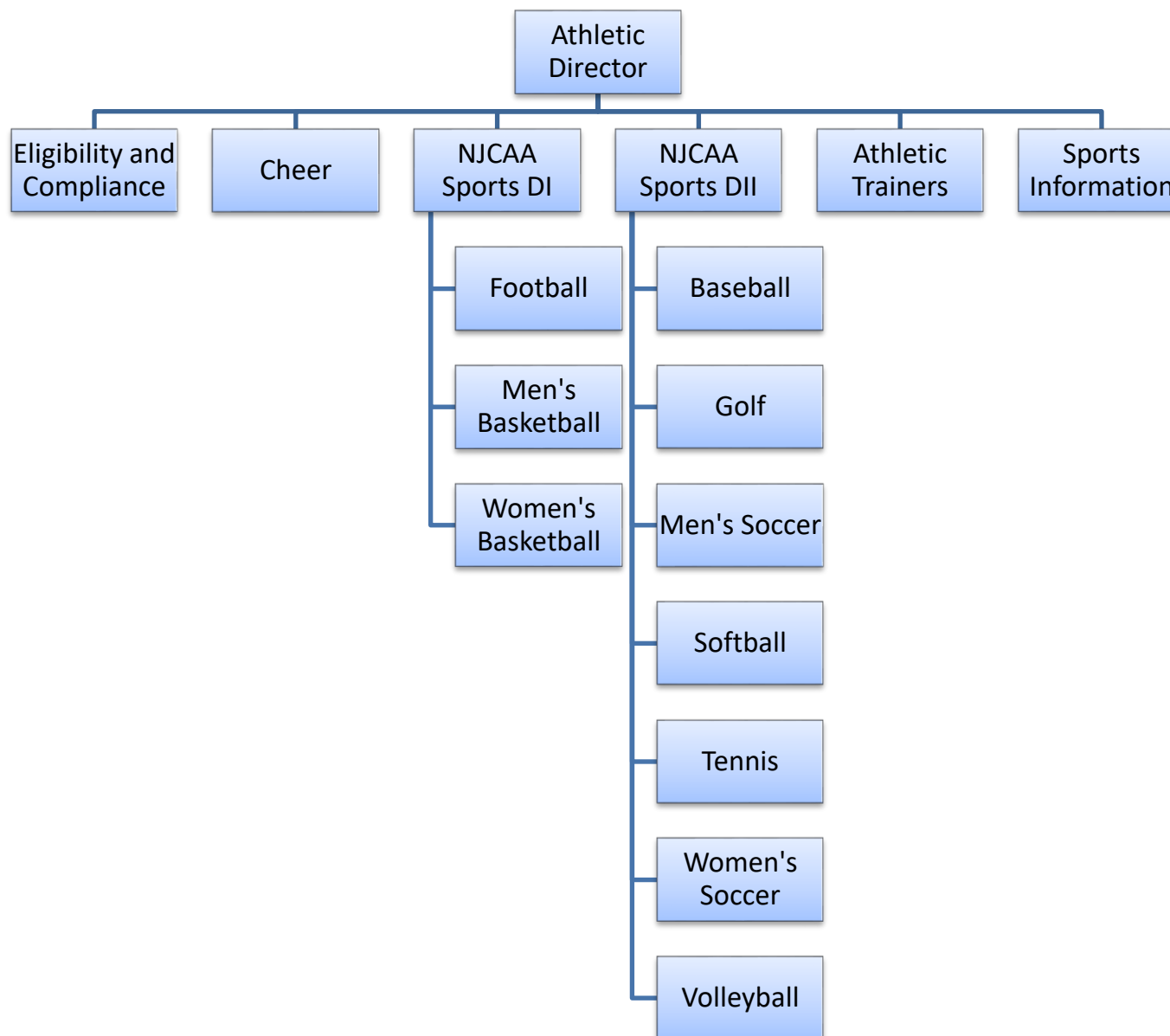
Organizational Chart 5



Organizational Chart 6



Organizational Chart 7



STANDING COMMITTEES

The success of the educational program at Southwest Mississippi Community College resides with the faculty, both individually and collectively. Individually, faculty members develop and implement course syllabi, conduct classes, and advise students. Collectively, faculty members serve on committees.

These standing committees are composed of full-time faculty and professional staff. The President is an ex-officio member of each committee, and the decision of any committee may be appealed to the President.

The responsibilities of each committee chair are as follows:

- Call a meeting of the committee at least once each semester
- Ensure that minutes of meetings are kept for documentation
- Provide a copy of the minutes of each meeting to the Vice-President for Academic Affairs within seven days of the meeting

A complete list of standing committees and specific responsibilities of committee members follow.

Academics and Curriculum

The Academics and Curriculum Committee, chaired by the Vice-President for Academic Affairs, is composed of the division chairs.

Responsibilities:

- Make suggestions to the administrative committee concerning learning on campus.
- Study the curriculum and approve recommended changes
- Coordinate the college curriculum with the curriculum of the area four-year colleges and the Mississippi Community College Board
- Ensure that policies governing maintenance of academic standing and curriculum requirements are the same for athletes as for other students
- Submit recommendations concerning distance learning to the administration

Administrative

The Administrative Committee is composed of the President, the Vice-President for Business Affairs, the Vice-President for Academic Affairs, the Vice-President for Student Affairs, the Vice-President for Career-Technical Education, the Vice-President for Admissions and Records, and the Vice-President for Physical Resources.

Responsibilities:

- Formulate and evaluate administrative college policy
- Work with the Vice-President for Business Affairs to ensure the integrity of the general financial program
- Articulate with the senior colleges of the area to coordinate the educational program
- Conduct on-going evaluations of the educational program
- Review and approve the intercollegiate athletic unit planning for each academic year

Admissions

The Admissions Committee is composed of the Vice-President for Admissions & Records, staff, and faculty appointed by the Vice-President for Academic Affairs.

Responsibilities:

- Recommend needed changes to the administration regarding admission requirements
- Review admissions data

Appeals

The Appeals Committee is composed of faculty representatives from the various divisions.

Responsibilities:

- Hear appeals from students who have been denied re-entry in class by the Attendance Officer, because of excessive absences or who feel they have been denied other student rights
- Suggest to the Vice-President for Student Affairs any improvements to the college attendance policy or its implementation
- Serve as an appeal board for students who have received disciplinary action due to misconduct in a classroom, dormitory, or on or off campus at any collegiate competition. Misconduct includes cheating (giving or receiving information on an examination), cursing, possession or consumption of alcohol or illegal drugs on campus, any form of harassment of an instructor or student, or other disruptive behavior.
- Make determinations regarding academic probation, academic suspension, and readmission of students due to poor academic performance
- Make determinations in the changing of a student's status (e.g., dropping a course, changing to audit)
- Hear academic appeals from students concerning academic matters.

Disabilities

The Disabilities Committee is composed of members from various divisions of the college.

Responsibilities:

- Make recommendations for providing special needs for disabled students on campus
- Coordinate with the faculty regarding special arrangements that need to be made in each classroom for each student disability
- Assist the Disabilities Coordinator in maintaining federal law compliance

Dual Enrollment

The Dual Enrollment Committee is composed of faculty from divisions offering dual enrollment/credit.

Responsibilities:

- Serve as a mentor for faculty teaching dual enrollment/credit classes at the local high schools.
- Serve as a liaison between the dual enrollment/credit instructors concerning course descriptions, textbook information, student outcomes, student outcome data, etc.

Faculty Liaison

The Faculty Liaison Committee is composed of various faculty members.

Responsibilities:

- Serve in an advisory capacity to the administrative staff in an effort to maintain communications between the faculty and the administration
- Recommend in-service programs for faculty development
- Recommend to the administration any action that should be taken regarding the academic success, physical and emotional well-being, and social development of student athletes
- Plan social activities involving faculty and administrative staff
- Be responsible for receiving and considering any recommendations from the faculty and students concerning the entire athletic program

Faculty Orientation

The Faculty Orientation Committee is composed of faculty representatives from the various divisions.

Responsibilities:

- Assist the Vice-President for Academic Affairs and division chairs as needed in the orientation of new faculty
- Review and revise, if necessary, the procedure manual for faculty

Institutional Planning

The Institutional Planning Committee, chaired by the Director of Institutional Effectiveness, is composed of representatives from various division/units of the college.

Responsibilities:

- Review and submit the institutional planning model to the Administrative Committee
- Review and submit basic institutional planning assumptions to the Administrative Committee
- Review and submit support information for planning to the Administrative Committee
- Review and submit institutional planning goals to the Administrative Committee
- Review and submit the institutional plan to the Administrative Committee

Library-Learning Resources

The Library-Learning Resources Committee is composed of faculty from the various divisions.

Responsibilities:

- Assist faculty and students with library and learning resources policies and serve as a conduit for faculty and student input
- Act as the chief advisory body to the librarian in developing and promoting policies and procedures that ensure the effectiveness of the Library-Learning Resources Center in the overall college program

Public Relations

The Public Relations Committee is composed of faculty from various divisions.

Responsibilities:

- Review and make recommendations for news releases
- Assist in the development of advertising campaigns

Publications

The Publications Committee is composed of faculty from various divisions.

Responsibilities:

- Review and make recommendations for all student publications
- Provide guidance to students in the publication of the Whispering Pines (yearbook) and The Pine Burr (student newspaper)

Safety

The Safety Committee is composed of faculty from various divisions and other employees.

Responsibilities:

- Develop policies and procedures for the handling and disposal of hazardous waste
- Develop procedures for safety during bad weather
- Maintain emergency exit procedures and schedule drills
- Review the Safety and Security Plan of the college and recommend procedures for the general safety of employees and students
- Work with the Disabilities committee in maintaining ADA/OCR compliance

Student Recruitment and Orientation

The Recruitment and Orientation Committee is composed of counselors and faculty.

Responsibilities:

- Review and recommend procedures for effective recruitment of students
- Develop materials to be used in recruiting students
- Provide assistance to faculty and staff in their recruitment of students
- Review the orientation program and make recommendations for improvement

Technology and Telecommunications

The Technology and Telecommunications Committee is composed of college personnel who are responsible for technology, telecommunications, and related activities.

Responsibilities:

- Serve in an advisory capacity to the administration and faculty for specifications relating to technology and telecommunications for the college
- Review the technology and telecommunications component of the institutional strategic plan
- Review utilization procedures for institutional technology and telecommunications

SECTION 3 – PERSONNEL

The administrative, faculty, and support personnel of Southwest Mississippi Community College work collaboratively to ensure academic success for students and to provide continuing support for the community. It is through the joint efforts and energies of the personnel that the college realizes its goals and objectives. Therefore, Section 3 of the *Faculty Handbook* addresses issues pertinent to faculty regarding job descriptions, professional growth, and other general information.

Absence

Each faculty member, absent from campus or clinical laboratory during the workweek, is expected to electronically submit a Request for Leave to the division chair. The division chair will approve the request and it is then forwarded to the appropriate administrator (Vice-President for Academic Affairs or Vice-President for Career and Technical Education). In case of an emergency absence for any reason, a faculty member should notify the division chair by phone or text.

Extended absences by faculty members will require a conference with the division chair, the appropriate administrator (Vice-President for Academic Affairs or Vice-President for Career and Technical Education), and the President.

Academic Freedom

In the development of knowledge, research endeavors, and creative activities, college faculty and students must be free to cultivate a spirit of inquiry and scholarly criticism. They must be able to examine ideas in an atmosphere of freedom and confidence and to participate as responsible citizens in community affairs. However, academic freedom must be subject to the self-restraints imposed by good judgment and public support of the institution. Faculty members must fulfill their responsibility to society and to their profession by manifesting academic competency, scholarly discretion, and good citizenship. At no time will the principle of academic freedom protect an incompetent or negligent faculty member nor will it prevent the institution from making proper efforts to evaluate the work of each faculty member.

Assignment of Grades

Lead instructors have the sole authority for the assignment of grades for their courses. Only the lead instructor has the authority to authorize the change of a recorded final grade on official college records. Should the assigned grade be challenged via the appeals process, the grade awarded shall be based on the decision of the appeals process.

Communications

Calendars/Newsletters

The Vice-President for Student Affairs keeps a calendar of all campus activities and publishes a weekly newsletter containing a calendar of events scheduled for the coming week. These newsletters are distributed through e-mail. Faculty members are asked to submit information detailing upcoming events through e-mail, campus mail, or telephone to the Office of the Vice-President for Student Affairs before Wednesday afternoons by 4:00 p.m. All civic and social activities or events to be held on campus must be cleared through the Facilities Manager.

The Registrar's office publishes for and distributes to faculty members a semester or yearly calendar detailing important events, dates, and deadlines pertinent to faculty.

Campus Mail

Faculty may have mailboxes in the Horace C. Holmes Student Union. E-mail accounts are assigned for both internal and external business correspondence. Although mail is 24

placed daily, excluding weekends and holidays, faculty primarily use e-mail for internal correspondence.

New faculty members can obtain a faculty mailbox by contacting the bookstore manager; all faculty members are assigned an e-mail address as part of the hiring process.

Information Technology Acceptable Use Policy

The purpose of information technology systems (FAX, telephone, computer, and network) at Southwest Mississippi Community College (SMCC) is to support the educational mission of the college in accordance with college policies and in a manner conducive to the overall instructional climate. Access to these systems is a privilege. All users must respect the rights of others and the integrity of the information technology systems and related resources. Any activity that interferes with the ability of these systems to support the educational mission of the college will be blocked or disabled without notice. By accessing SMCC computer and network resources, all users agree to abide by this policy.

Users have the following responsibilities:

- Users must follow all the requirements of college policies, regulations, and procedures. In addition, users must observe all relevant laws, regulations, and contractual obligations.
- Users may enter the college's information technology systems only through an authorized SMCC account. Accounts and account passwords may not be shared.
- Inappropriate use of information technology resources and hindering access to those systems is prohibited. Users must not obstruct the operations of the SMCC information technology system in any way. Users may not use SMCC computer or network resources for personal gain.
- Users must respect the privacy of others by refraining from inspecting, broadcasting, or modifying personal data without consent. Users must not use the SMCC information technology system to make statements that may injure another person or entity.
- Use of the SMCC network to access, copy, or transmit inappropriate, obscene, and/or pornographic material is not permitted.
- Users must observe all pertinent copyright laws and licensing requirements when using, copying, and/or downloading software programs or files. SMCC expects all users to adhere to the United States Copyright Act and the related acts which further define the proper use of copyrighted materials.

In order to maintain system performance and security, computer and network activity will be monitored by authorized individuals. If individuals are suspected of abusing any of these systems, the contents of user files, network activity, or related items may be inspected with a written request from the appropriate Vice President. In the case of a student, the Vice President of Student Services will issue the request. Account privileges may be suspended

while a reported violation is under review by the Vice President. Violations may result in termination of privileges, payment for damages, legal prosecution, or other penalties.

Mississippi Laws that apply to the use of computing and networking systems and to publicly accessible web pages.

[Sec. 97-45-11](#) | [Sec. 97-5-29](#) | [Sec. 97-19-85](#) | [Sec. 97-29-101](#) | [Sec. 97-45](#)

Federal Laws that concern copyright materials can be found at [the United States Copyright Act website](#).

Institutional Publications

A copy of the *Faculty Handbook*, the current college *Catalog*, and other institutional documents published by the college are posted on the college's website.

Telephone Use

Each faculty office is equipped with a telephone to be used primarily for college business. Faculty may contact the college's Information Technology department for assistance regarding the operation of college telephones.

Conflict of Interest

Full-time employees shall not engage in any outside employment that would interfere in any respect with their responsibilities to the college.

Contracts

All regular full-time teaching faculty will receive written contracts that specify the position, the salary, the length of employment in months, and the starting and ending dates covered by the contract. As stated in each contract, changes in work assignments may be made when necessary for the good of the college. Salaries will be paid in twelve equal installments through direct deposit. Part-time teaching faculty will not receive written contracts.

Dress Code/Grooming Policy

As a representative of SMCC, your appearance and conduct reflect not only upon yourself, but also upon the College, and imparts a lasting impression upon our students as they prepare to enter the workforce. Violation of SMCC's Dress Code/Grooming Policy may result in disciplinary action, up to and including termination.

Employees are expected to use good judgment and common sense, and wear business casual clothing that is appropriate for a professional setting. When traveling as a representative of SMCC, meeting with visitors from outside the College, recruiting prospective students, or hosting special groups or guests, administrative, instructional and support employees shall wear business appropriate attire. Some occasions may require business dress attire which includes, for men, coat and tie; for women, suits or dresses that one might expect to see in a professional office.

Public Safety/Physical Plant/Maintenance employees shall wear the appropriate uniform designated by their Department Head. Shorts of appropriate length and style may be worn during warm or hot temperatures.

Faculty should not wear blue jeans or t-shirts while in a classroom/lab setting. Exceptions may be made for hard shop vocational instructors and for certain prior-approved occasions.

Staff may dress in blue jeans/SMCC t-shirts on selected, scheduled Fridays. Employees are encouraged to wear collared SMCC shirts which may be purchased in the college bookstore.

Clothing/footwear considered inappropriate and unacceptable includes, but is not limited to:

- Items that are worn, ripped, frayed, torn or unkempt
- Items containing obscene, profane, discriminatory, or otherwise inappropriate words or pictures
- Items advertising alcoholic beverages, drugs, drug paraphernalia or tobacco products
- See-through garments, halter tops, bare midriff/back tops, tank tops/muscle shirts, low-cut blouses, mini-skirts/mini-dresses, and sweat pants
- Overly tight or revealing clothing
- Pool/beach attire including beach sandals and flipflops
- Worn out shoes
- Dresses or skirts with a length higher than three inches above the knee

Grooming is essential for the overall professional appearance of all SMCC employees. Listed below are required grooming practices in the workplace:

Employees must practice personal hygiene and be free of offensive odor. Employees' hair must be neat and clean and worn in a conventional style. Hair color may be dyed, tinted or frosted in any natural tones or shades. Facial hair, including mustaches and beards, must be short and neatly trimmed and maintained.

Fingernails must be clean and neatly trimmed. Fingernail polish in conservative colors may be worn.

Any elaborate, excessive tattoos should be covered by clothing, make-up or otherwise concealed during class time, on or off campus meetings, or while recruiting prospective SMCC students, unless the employee has requested and obtained a reasonable accommodation for a sincerely held religious belief. Facial tattoos that cannot be covered or concealed during working hours are not acceptable.

Body piercings should be limited to two earrings per ear lobe in conservative colors and size. During working hours, ear gages should be plugged closed with plugs matching skin tone. During a professional setting, any exposed or visible facial piercings must be removed.

Jewelry, including necklaces, rings, and earrings that are conservative in style, size and color are acceptable. Make-up must appear professional and natural and should be conservative in styles and colors.

Accommodations to the Dress Code/Grooming Policy for Religious Beliefs and/or Physical Conditions: Recognizing and respecting the diversity of applicants and our employees, there may be circumstances when SMCC provides accommodations to the Dress Code/Grooming Policy. Under certain circumstances, federal anti-discrimination laws may require SMCC to provide a reasonable accommodation to these standards to accommodate an employee's sincerely held religious beliefs and/or physical condition. Employees seeking such an

accommodation must notify their immediate supervisor of the need for accommodation and make such a request. Any employee who has made such a request to their immediate supervisor, and believes that they have not been given a reasonable accommodation should contact SMCC Human Resources.

Distance Learning

The college participates in the Mississippi Virtual Community College (MSVCC), a consortium of fifteen of the public community colleges in Mississippi. Instructors teaching classes for the MSVCC have additional requirements. An instructor teaching an online class must have the same academic credentials as required for the same class taught through traditional methods.

All online instructors are required to post contact information on the course website for each course that they teach. That information includes, but is not limited to, a campus e-mail address, office phone number, and office hours and location (for traditional instructors only). Students are encouraged to use e-mail or messaging within the learning management system as the initial contact. Except in the case of an emergency, an instructor should inform students prior to being unavailable to answer e-mail within 24 hours, not including weekends.

Online instructors are reimbursed at the same rate as evening or summer school traditional instructors.

Any course that is to be delivered through online methods must receive approval from the division chair, the appropriate administrator (Vice-President for Academic Affairs or Vice-President for Career and Technical Education), and the Distance Learning Coordinator. The college recognizes that all courses are not appropriate for online delivery, so instructors who teach the course in the traditional classroom should be consulted when making course offering decisions. The online course should resemble as much as possible the traditional course.

Instructors for online courses must be approved by the Vice-President for Instruction and the e-Learning Coordinator. Communication is a very important part of the online process, so only instructors who complete faculty assignments in a timely manner will be allowed to teach online classes.

Online instructors will be evaluated by students each semester. Instructors who receive a rating below 4.0 in any area must submit a plan of improvement to the appropriate administrator (Vice-President for Academic Affairs or Vice-President for Career and Technical Education).

Although the Mississippi Community College Board provides some faculty training, the ultimate responsibility lies with the college. The Distance Learning Coordinator will plan training and/or exchange sessions as needed. Distance learning personnel will also be available for technical assistance.

Institutional Planning

The college provides an opportunity for its personnel to be an integral part in maximizing attainment of the institutional mission. Strategic institutional planning for the college permeates all levels and entities. This process allows the college to maintain and improve services and instruction by developing priorities (strategies), implementing those strategies, assessing the outcomes (gathering results), and developing priorities for the next planning cycle.

Liability Insurance

Vehicles: The college provides vehicles, when available, for faculty and staff travel. Although the college provides insurance coverage related to the use of these vehicles for college activities, faculty and staff should have individual coverage to ensure protection in case of an accident resulting in possible litigation.

Laboratory: Although faculty who teach courses which require laboratory experiences and the students who participate in such experiences are covered by a blanket liability insurance policy related to their specific profession, the college encourages faculty to obtain additional insurance related to their profession.

Teaching: All faculty are encouraged to obtain individual teaching liability insurance. Career-technical instructors are encouraged to have liability insurance through the Association of Career and Technical Education.

Non-Discrimination

As an equal opportunity employer that complies with all applicable laws regarding equal opportunities in all its activities and programs, the college does not discriminate on the basis of race, color, sex, or national origin. This policy extends to the qualified handicapped. The compliance official is the Vice-President for Student Affairs.

Orientation of New Faculty

The appropriate administrator (Vice-President for Academic Affairs or Vice-President for Career and Technical Education), assisted by the Faculty Orientation Committee and respective division chairs, assumes primary responsibility for orientation of all new full- and part-time faculty.

Professional Growth

The college encourages professional growth of all full-time college faculty members by providing opportunities for continuous professional development, which includes formal academic preparation as well as seminars and workshops that are offered periodically. After obtaining initial approval for participation in professional development activities, faculty must gain final approval from the appropriate administrator (Vice-President for Academic Affairs or Vice-President for Career and Technical Education).

Continued Study: Increments in salary are provided as incentives for advanced graduate study. Full-time faculty may enroll tuition-free in classes offered at the college for professional growth provided that the class does not interfere with their teaching assignment and that ten paying students are enrolled in the class. Before enrolling in a class on campus, full-time faculty must receive approval by making application to the appropriate administrator (Vice-President for Academic Affairs or Vice-President for Career and Technical Education) stating the course name and number and the date of expected enrollment.

Workshops/Seminars: The college expects faculty members to be knowledgeable of and to participate in professional growth opportunities that will promote their individual growth as academic teachers and skillful practitioners. Thus, the college provides funds for full-time faculty to attend both state and regional meetings concerning their subject areas. To receive reimbursement of expenses incurred for seminars, workshops, conventions, and other activities that promote faculty growth, faculty members should use the appropriate Travel Request Form and SMCC Travel Expense Voucher.

Because the main responsibility of faculty is teaching, travel is limited to one major conference/workshop per year or a one-day workshop each semester for each instructor.

Recruitment of Faculty

The college maintains a fair and equitable policy on the recruitment and employment of new faculty. When a vacancy occurs, the college uses the current Human Resources process for advertising positions. A committee made up of the appropriate administrator (Vice-President for Academic Affairs or Vice-President for Career and Technical Education), division chair, and other faculty will interview the best applicants. When a prospective instructor has been identified, the President makes a recommendation to the Board of Trustees for final approval.

All faculty members should have earned degree(s) from a regionally accredited institution or show evidence of the appropriateness of their academic preparation. Work experience may be accepted as part of the preparation for determining the qualifications of a career or technical instructor.

Retirement

State law requires the college, as well as all other state institutions, to contribute to the Public Employees Retirement System (PERS) of Mississippi. Employees seeking specific information regarding state retirement benefits should contact Human Resources.

Salary

Southwest Mississippi Community College bases the salary of all academic instructors upon the years of teaching experience and educational criteria.

ACADEMIC CRITERIA	
STEP A	Master's degree (18 graduate hours must be in the teaching field)
STEP B	Step one requirements plus 30 additional graduate hours beyond the Master's degree, 24 of which must be in the teaching field
STEP C	Step one requirements plus 60 graduate hours, 48 of which must be in the teaching field or an earned Doctorate
CAREER-TECHNICAL CRITERIA	
STEP A	Specialty or Associate's degree
STEP B	Bachelor's degree
STEP C	Master's degree or an earned Doctorate

Degrees and additional hours must be from a regionally-accredited institution. In step A of the academic scale, the 18 graduate hours can be taken before or after receiving the Master's degree. In the other steps, the graduate hours must be taken after obtaining the Master's degree to qualify for advancement. The Vice-President for Instruction must approve the graduate hours in related fields.

Evening school, online, and summer school pay will be based on total enrollment figures and class size. (Regular faculty are expected to teach night school and summer school classes as needed.)

Teaching Load

Faculty (Full-time)

A teaching load of 15-18 semester hours (two laboratory contact hours equal one lecture hour) is considered average. The division chair is limited to a maximum of 15 hours. In the event of a combination lecture-lab type schedule, attempts are made to keep the schedule within twenty clock hours per week. State statutes limit associate degree nursing instructors to a student-teacher ratio of 10:1 in the clinical setting and a 15:1 student-teacher ratio in the classroom setting.

Faculty (Part-time and Adjunct)

Faculty who teach less than 15 semester hours per semester have part-time status.

Tenure/Termination

The State of Mississippi does not have tenure laws; therefore, there is no formal tenure for college faculty. Each full-time faculty member signs a contract, subject to renewal each academic year, which specifies the time period of employment.

Each year, division chairs make written recommendations for reemployment of faculty and submit these recommendations to the appropriate administrator (Vice-President for Academic Affairs or Vice-President for Career and Technical Education). In turn, the appropriate administrator (Vice-President for Academic Affairs or Vice-President for Career and Technical Education) examines current faculty contracts and written recommendations. The President submits these letters of renewal or non-renewal of contracts to the Board of Trustees for final approval.

In situations where it becomes necessary to terminate any contracted person prior to the specified contract expiration date or in the event of non-renewal of a contract, the faculty member has recourse to due process as outlined elsewhere in this document.

Travel

The college supports faculty members in college-related travel, and the appropriate administrator (Vice-President for Academic Affairs or Vice-President for Career and Technical Education) has the authority to approve travel requests made by faculty. To obtain approval and reimbursement for college-related travel, faculty should use the following procedure:

1. Complete a travel request form, including signatures as listed on the form.
2. Submit the form to the business office. If a vehicle is requested, the form will be forwarded to maintenance for vehicle assignment. You will receive an approved copy.
3. Submit the Travel Expense Voucher. Paid receipts must be attached to the Travel Expense Voucher in order to obtain reimbursement.

Travel is based on actual odometer mileage via the closest route to destination. Expenses incurred for lodging, parking fees, registration fees, workshops, seminars, conventions, and other activities related to faculty growth will be allowed.

Work Schedule and Office Hours for Faculty

Faculty (Full-time)

All full-time academic and technical faculty members are required to spend a minimum of 35 hours per week in instruction, office, staff or committee meetings, or travel. Faculty should post a copy of their schedule for students.

Office hours may be substituted with other college-related activities. Approved travel will be substituted for days or hours of instruction or office hours actually missed during that absence. The division chair and the appropriate administrator (Vice-President for Academic Affairs or Vice-President for Career and Technical Education) must approve any anticipated faculty absences from classes for college-related activities and any changes in class meeting times.

Nine-, ten- and eleven-month instructors should maintain office and/or class hours from 8:00 a.m. until 3:30 p.m. Twelve-month office personnel should maintain hours from 8:00 a.m. until 4:30 p.m. All offices close at 3:00 pm on Fridays.

Faculty (Adjunct)

Adjunct faculty are expected to be available for office hours equivalent to half the assigned instruction time.

Online, evening, and online dual enrollment

Full-time and adjunct day instructors are the preferred instructors for online, evening, and online dual enrollment classes. A full-time instructor is limited to three additional classes beyond those included in contract each semester. Those three classes may be any combination of full-term, short-term, or partial classes, but preparation and instruction responsibilities for these classes should take place after regular work hours.

ADMINISTRATION

Southwest Mississippi Community College administration works to ensure that the daily operation of the college supports its mission. It is the administration, led by the college President, who implement and enforce the policies and practices established by the governing body, the Board of Trustees. The following information describes the specific duties of each administrator.

President

As the executive head, the college President, who reports directly to the Board of Trustees, sees that the college operates in conformity with the policies established by the Board of Trustees. He attends board meetings and reports periodically on the execution of board policies or submits to the board recommendations for policy changes. Although the ultimate responsibility for the operation of the college rests with the board, the President, within the college, bears final responsibility for its administration.

Duties and Responsibilities:

- Acts as the executive officer of the Board of Trustees and is charged with the responsibility of implementing its policies and enforcing its regulations
- Presides over faculty meetings or delegates authority to preside to the Vice-President for Instruction
- Is responsible for recommending competent and cooperative teaching personnel to the Board of Trustees
- Submits recommendations to the Board on all matters pertaining to the promotion and dismissal of members of the teaching faculty
- Is responsible for the selection and employment of competent and cooperative administrators and staff personnel other than teaching faculty
- Represents the college to its constituency, the general public, and educational groups
- Submits reports to the Board, accrediting agencies, and appropriate state agencies
- Assists the Board in raising funds for the support of the college
- Strives to maintain harmony and unity of purpose among all members of the teaching and administrative staff, the Board, the alumni, and the student body
- Delegates authority and responsibility to other officers, staff, faculty, and employees in order to ensure the full discharge of their respective duties
- Acts as an educational advisor to the Board and keeps the Board fully informed concerning the operation and welfare of the college
- Directs the public relations program of the college
- Directs the operations of the athletic programs

Vice-President for Academic Affairs

Acting under and in conjunction with the President, the Vice-President for Academic Affairs, who reports directly to the President, serves as the chief instruction officer of the college and is responsible for educational policy and programs. This includes program review and improvement, accreditation and self-evaluation, assessment of student learning and advancement of the student success, academic personnel decisions, budget development,

enrollment management, fiscal accountability, program and curriculum development.
Supervises division chairs.

Duties and Responsibilities:

- Supervises and directs all phases of the instructional program, both on and off campus, by working with the various division chairs, directors, assistant directors, and committees
- Works with division chairs and other administrators in strategic institutional planning, class schedule planning, curriculum development, budget planning, textbook changes, and *Catalog* revisions
- Schedules faculty meetings and presides in the absence of the President
- Is responsible for the preparation of the college *Catalog*, schedules, faculty handbooks, manuals, and other such official college publications
- Assists in the preparation and management of the college budget
- Consults with the division chairs in the selection of instructional personnel
- Approves and forwards to the President recommendations on all new instructional personnel
- Appoints faculty committees
- Administers faculty development and evaluation
- Maintains files of all teaching faculty
- Assists the Registrar with registration
- Assists in the recruitment of students
- Supervises the distance learning program
- Coordinates technology and telecommunications
- Coordinates the Student Success Center

Vice-President for Career and Technical Education

Under the direction of the President, the Vice President for Career-Technical Education has the overall responsibility for the administration and supervision of career-technical programs, students, personnel, facilities and equipment.

Duties and Responsibilities:

- Serves as division chair for the Career-Technical division
- Gives general direction and supervision in coordinating and carrying out of policy for all career-technical programs
- Oversees the operations of the Southwest Mississippi Regional Workforce Training Center
- Assists the Vice-President for Instruction and the Registrar each semester in determining class needs in the career and technical areas
- Coordinates and compiles the division budget
- Approves all purchase order requests for the division
- Prepares or supervises the preparation of reports, follow-up studies, equipment requests, local plans, applications, and all other items to be submitted to the Mississippi Community College Board
- Represents the college at state meetings of directors and at conferences and workshops planned and implemented by the Mississippi Community College Board
- Sees that an accurate inventory is maintained on all equipment

- Regularly conduct a tour to inspect all classrooms, property, equipment, etc.
- Coordinates the selection of members of advisory committees from businesses and industries in the district and works with these committees in program planning and improvement
- Develops and submits the Local Plan for Career-Technical Education to the Mississippi Community College Board
- Directs the activities of the career technical counselors and sees that a comprehensive counseling program is carried out for the career technical students
- Assists career and technical faculty in meeting licensing requirements by keeping them informed of both the requirements and the professional improvement opportunities available
- Works with the faculty and Career-Technical Counselor to complete final and follow-up reports required by the Mississippi Community College Board
- Assists faculty and counselors in the recruiting and placement of students
- Oversees the Work Based Learning Program
- Serves on the Curriculum Committee

Vice-President for Student Affairs

The Vice-President for Student Affairs, who reports directly to the President, is responsible for all aspects of the student services program.

Duties and Responsibilities:

- Coordinates the student recruitment program of the college
- Supervises, through the dormitory supervisors, student dormitory living
- Supervises the student work-study program
- Supervises all intramural athletics
- Coordinates student activities, including supervising student clubs and publications
- Coordinates, with the Director of Food Services, special events (banquets, cook-outs, special meals, etc.) involving the food service program
- Administers student financial aid programs
- Serves as faculty advisor to the Student Government Association
- Serves as attendance officer
- Develops environmental health and safety programs for the college
- Maintains student activities calendar and publishes weekly bulletin
- Directs the operation of the campus police
- Administers student discipline
- Responsible for student recreation activities
- Responsible for safety and security of students, faculty, staff and guests of the college.

Vice-President for Financial Affairs

The Vice-President for Financial Affairs reports directly to the President and is responsible for all financial affairs of the college. For developing and recommending policy, goals and objectives for such services. Is responsible for all budgetary, financial and other business functions of the college operations, including all Auxiliary organizations.

Duties and Responsibilities:

- Is responsible for and supervises all accounting functions including the encumbrance, payment and reporting of all commitments college funds
- Supervise the entry of all accounting information, from journal entry to posting to closing of accounts
- Supervise preparation of trial balances
- Provide up-to-the-minute reports of the status of all operating accounts on an as-needed basis
- Maintain currency of knowledge in governmental and non-profit accounting
- Conduct periodic evaluations of Business Affairs procedures and make recommendations for revised procedures
- Work in-house and outside data processing services in the recoding, manipulation and reporting of budgeting/accounting information
- Prepare and coordinates the annual college budget for all funds
- Work with outside auditors in the preparation of the annual audit
- Monitor all expenditures for adherence to budget guidelines
- Develop, in cooperation with President, Financial Affairs policies for recommend approval by the Board of Trustees.
- Coordinate the planning and construction of college facilities
- Serves as the Purchasing Agent for the college by approving all purchase requisitions and oversees the purchasing cycle
- Administer college contracts
- Supervise through Human Resource all aspects of human resources management and employee relations
- Directs the investment of funds as prescribed by state law
- Supervise Auxiliary Services including student dining, catering and bookstore operations
- Assists the President in preparing and presenting the instructional and other budgets to the Board of Trustees for approval; monitors and makes reports to aid divisions with their budgetary responsibilities
- Prepares financial reports as required and keeps the President and Board of Trustees apprised of the financial condition of the college
- Follows methods established by the Government Accounting Standards Board (GASB) in its pronouncements 34 and 35 for colleges and universities
- Assists in the recruitment of students

Vice-President for Admissions/Registrar

The Vice-President for Admissions and Registrar, who reports directly to the President, provides leadership to plan, organize and manage all of the activities related to the Records and Registration, including serving as the official authorized keeper of the college's student records. This position is responsible for the compilation and maintenance of student records in compliance with federal law, state law, and accreditation agencies. The Registrar compiles and maintains student records and state reports; assists students and patrons; maintain smooth operation of office; keep abreast of regulations and procedures of student records as required by accreditation agencies.

Duties and Responsibilities:

- Hire, supervise and evaluate the Records and Registration staff

- Organize and administer the records, registration and graduation functions, including transcript evaluations
- Supervise the coordination, evaluation and certification of all graduation applications
- Responsible for collecting, recording, maintaining and reporting of student records within guidelines, e.g., grades, registration data, transcripts, athletic eligibility and audits
- Provide leadership and develop appropriate recommendations for the implementation of related technology application in support of enhanced services offered through Registration and Records
- Develop and administer the budget
- Problem solve the research, analysis and resolution of student disputes as they relate to records and registration
- Collaborate with administrators, faculty, IT and counselors to facilitate and improve services to students, including catalog and registration/records policy questions
- Appropriately exchange student information with other colleges or universities
- Participate in professional development activities and serve on college committees that support the goals and objectives of the division of the college
- Coordinates and maintains file copies on various local, state, regional, and national reports
- Serves as a member of the Admissions Committee
- Assists the Vice-President for Instruction with the editing of the college *Catalog* and other official college publications
- Enforces the rules and regulations in regard to degrees, diplomas, and certificates
- Assists in the recruitment of students

Vice-President for Physical Resources

The Vice-President for Physical Resources manages and supervises the physical plant and physical resources of the College, and provides vision for facilitating and supporting delivery of services related to these resources. Reports to the President.

Duties and Responsibilities:

- Oversee personnel in the Buildings, Grounds, Custodial Services, Facilities Management, and Water, Gas and Wastewater Treatment Departments Develops environmental health and safety programs for the college
- Provide the Board of Trustees, the President and Administrative staff with reports and data sufficient to make sound business decisions regarding physical resources and technology services
- Complete external reports as required by federal and state agencies
- Promote professional development of all personnel within the Physical Resources Division
- Oversee construction, construction design, maintenance and remodeling of all buildings, streets and facilities on campus
- Oversee Campus Master Planning, energy management and facilities management
- Oversee property insurance and risk management for the campus
- Develop, support and implement preventive maintenance systems to increase the life of equipment and facilities on campus
- Provide oversight to ensure water treatment, wastewater treatment and natural gas facilities meet all applicable safety standards

- Work with a Certified Forester, the Board of Trustees and the President to develop a management plan for College timber holdings and to ensure that plan is implemented
- Assist with grant writing and grant administration on an as needed basis
- Utilize electronic technology to develop and implement systems to ensure efficient operation of each facet of the Physical Resources Division
- Oversees the college fleet
- Provide oversight to ensure campus-wide coordination of facilities scheduling
- Ensures that the campus buildings and grounds are well-maintained and attractive

Associate Vice-President for Nursing

The Associate Vice-President for Nursing, who reports directly to the Vice-President for Academic Affairs is responsible for overall leadership, development, direction and administration of all aspects of the nursing programs. Ensuring that the programs are in compliance with all laws and regulations of their accrediting and/or regulatory bodies. ADN is accredited by ACEN and IHL; PN is accredited by Mississippi Community College Board and CNA is regulated by the State Department of Health.

Duties and Responsibilities:

- Serves as division chair for the Nursing division
- Communicates with full-time and part-time faculty on curriculum and instruction matters and ensures ongoing development of staff
- Resolves issues and problems that may arise with faculty, staff and students
- Devises and supervises student recruitment and retention efforts
- Develop and implement the program budget
- Coordinates, develops and approves student assignments and clinical rotations
- Plan, manage and evaluate all aspects of the program including, but not limited to:
 - a. Faculty and staff
 - b. Curriculum development and implementation, including coordination with curriculum committee
 - c. Program admissions, recruitment, advanced placement and outreach
 - d. Compliance with rules and regulations
- Assists the Vice-President for Instruction and the Registrar each semester in determining class needs in nursing
- Ensures ongoing program evaluation; takes appropriate action to resolve problems or nonconformance items
- Coordinates all departmental faculty committees and nursing advisory committees
- Assists with identification and contract negotiation for use of clinical facilities; assures that contracts comply with regulator body regulations; and maintains file of current contracts
- Oversees the Associate Degree Nursing, Practical Nursing, and Health Care Assistant programs
- Approves all purchase order requests for the division
- Prepares or supervises the preparation of reports, follow-up studies, equipment requests, local plans, applications, and all other items to be submitted to the Mississippi Community College Board, Mississippi Board of Nursing, or Accreditation Commission for Education in Nursing
- Represents the college at state meetings of directors and at conferences and workshops

- Assists nursing faculty in meeting licensing requirements by keeping them informed of both the requirements and the professional improvement opportunities available

Division Chairs

Division chairs, chosen on the basis of seniority, academic ability, and leadership, in all instructional divisions report directly to the Vice-President for Academic Affairs and act as the division's spokesperson and advisor to the members of the teaching faculty under their supervision. Division chairs coordinate all course offerings and business procedures for their particular division.

Duties and Responsibilities:

- Provides leadership and promotes harmony and unity within the division
- Works with faculty in strategic institutional planning, class schedule planning, curriculum development, budget planning, and *Catalog* changes
- Implements directives from the Vice-President for Academic Affairs
- Participates with the Vice-President for Academic Affairs in the recruitment, selection, and retention of faculty members in the division
- Teaches classes according to college policy
- Reviews student evaluations, conducts personal evaluations of each division member, and recommends annually the re-election of each division member
- Prepares and submits a divisional budget to the Vice-President for Instruction
- Keeps pertinent divisional records and supervises divisional inventory
- Schedules and conducts divisional meetings
- Requests maintenance service for the division
- Assumes responsibility for the care and inventory of divisional equipment and materials
- Works with the Vice-President for Student Affairs in the recruitment of new students
- Performs additional duties unique to the division
- Serves on the Curriculum Committee and other committees as appointed
- Maintains standards necessary to meet criteria of appropriate accrediting agencies

Faculty (Full-time)

Following the course objectives and outlines they have developed, faculty have as their primary responsibility the instruction of the students assigned to them each semester. The teaching faculty report directly to their respective division chairs.

Duties and Responsibilities:

- Follows the established policies and procedures of the college that facilitate instruction, administration, and student well-being
- Serves as advisor for assigned students as part of the guidance/academic advising program
- Maintains competency and minimum requirements for teaching
- Prepares a course syllabus for each course taught; reviews and revises it annually and provides copies for the Vice-President for Academic Affairs
- Supports and encourages the college-sponsored extracurricular activities

- Supports and participates in the community affairs that contribute to the total program of the college
- Assists in maintaining the standards of conduct and discipline for the students as set forth by the college
- Assists the division chair in strategic institutional planning, developing a budget, planning curricula, maintaining inventory, updating the college *Catalog*, preparing reports as needed, purchasing instructional materials, and ordering textbooks
- Assists the librarian in maintaining an up-to-date collection of library resources
- Serves on committees as appointed
- Assists in the recruitment of students
- Teaches classes as assigned according to college policy
- Performs assigned duties during registration, homecoming, graduation, and intercollegiate activities
- Participates in all faculty meetings
- Attends student assemblies
- Participates in professional meetings and workshops to remain current in his/her curricula area
- Communicates with senior colleges and universities to ensure that the suggested programs of study remain current

Faculty (Adjunct and Part-time)

As the need arises, the college employs part-time faculty on the same basis and with the same employment qualifications as full-time employees. Part-time faculty are expected to provide their students with reasonable access for instructional assistance and to be available for outside assignments should the need arise. The division chair and the appropriate administrator (Vice-President for Academic Affairs or Vice-President for Career and Technical Education) assume responsibility for the supervision and evaluation of part-time faculty.

Duties and Responsibilities:

- Follows the established policies and procedures of the college that facilitate instruction, administration, and student well-being
- Maintains competency and minimum requirements for teaching
- Prepares a course syllabus for each course taught; reviews and revises it annually and provides copies for the division chair and the appropriate administrator (Vice-President for Academic Affairs or Vice-President for Career and Technical Education)
- Supports and encourages the college-sponsored extracurricular activities
- Supports and participates in the community affairs that contribute to the total program of the college
- Assists in maintaining the standards of conduct and discipline for the students as set forth by the college
- Assists the division chair in institutional strategic planning, developing a budget, planning curricula, maintaining inventory, updating the college *Catalog*, preparing reports as needed, purchasing instructional materials, and ordering textbooks
- Assists the librarian in maintaining an up-to-date collection of library resources
- Serves on committees as appointed
- Attend student assemblies and faculty meetings when possible
- Assists in the recruitment of students

- Recommends changes in the curriculum area to maintain an up-to-date program of study

SECTION 4 -- EDUCATIONAL PROGRAM

In an effort to meet its district's needs, Southwest Mississippi Community College dedicates itself to offering quality education to its students in lower-division college, occupational, and continuing education programs. Through each program, students gain the essentials to upgrade present skills, seek immediate employment, advance to a four-year institution, or enhance lifelong learning. Therefore, Section 4 of the *Faculty Handbook* details policies - academic, classroom, evening school, online, summer school, and graduation - related to the college's educational programs.

ACADEMIC POLICIES

Academic Freedom

In the development of knowledge, research endeavors, and creative activities, college faculty and students must be free to cultivate a spirit of inquiry and scholarly criticism. They must be able to examine ideas in an atmosphere of freedom and confidence and to participate as responsible citizens in community affairs. However, academic freedom must be subject to the self-restraints imposed by good judgment and public support of the institution. Faculty members must fulfill their responsibility to society and to their profession by manifesting academic competency, scholarly discretion, and good citizenship. At no time will the principle of academic freedom protect an incompetent or negligent faculty member nor will it prevent the institution from making proper efforts to evaluate the work of each faculty member.

Academic Advising

Academic advising is a process that includes development and delivery of accurate, current information regarding career options, educational programs, courses of instruction, resources, policies, and procedures to students. This process involves faculty, student services personnel, counselors, and staff.

The college conducts a systematic, effective program of undergraduate academic advising. On the application for admission, the student lists an intended major or program of study at the college. From a list of qualified advisors provided by the appropriate administrator (Vice-President for Academic Affairs or Vice-President for Career and Technical Education), personnel in the Registrar's office assign a faculty advisor to the student. The advisor talks with the student about career plans and may recommend further career exploration through the campus Regional Workforce Training Center, especially to those students undecided about their choice of major.

The ACT scores provide criteria for initial placement in classes. The individual ACT sub scores indicate students' need for these courses. Faculty members follow criteria listed in the current catalog when advising and scheduling students.

The advisor has full access to ACT scores and transcripts from high schools or last school attended, if the Registrar has these records. Appropriate faculty advisors and counselors may access information on the student's progress toward graduation, transfer requirements, transcripts, and current semester mid-term grades.

All advisors meet the qualifications of degree and experience within their teaching fields. Workshops provided periodically on campus assist advisors in improving their advising skills. Counselors provide regular updates to faculty advisors on program and transfer requirements. Faculty also attend conferences regarding program requirements and updates at the senior colleges and universities where students of the college transfer.

Curriculum Change Procedure

Each spring, faculty members should review their curriculum area for any needed changes. If changes are deemed necessary, proposed changes must be submitted to the appropriate division chair for approval. Approved changes will be forwarded to the appropriate administrator (Vice-President for Academic Affairs or Vice-President for Career and Technical Education), who will submit them to the Curriculum Committee for consideration. The Curriculum Committee will approve or deny the request and return it to the appropriate administrator (Vice-President for Academic Affairs or Vice-President for Career and Technical Education), who (for changes approved by the Curriculum Committee) will present the proposal to the Administrative Committee for inclusion in the Catalog for the upcoming year.

Experimental Teaching Policy

The college encourages faculty to experiment with new and innovative methods to improve instruction and/or to reach students with various learning styles. As part of the planning process, any instructor wishing to institute new teaching methods or techniques should present a written proposal, which includes evaluative criteria, to the division chair and the appropriate administrator (Vice-President for Academic Affairs or Vice-President for Career and Technical Education) for approval. At the end of the semester, the instructor will make an evaluation, based on the type of unique method chosen, to determine the effectiveness of the new teaching method. This evaluation must be submitted to the division chair and the appropriate administrator (Vice-President for Academic Affairs or Vice-President for Career and Technical Education) for review.

ASSIGNMENT OF GRADES

Lead instructors have the sole authority for the assignment of grades for their courses. Only the lead instructor has the authority to authorize the change of a recorded final grade on official college records. Should the assigned grade be challenged via the appeals process, the grade awarded shall be based on the decision of the process.

Grading System

At the first class meeting of each semester, the college expects instructors in each class to give their students a written explanation of their grading procedure in the course. At the end of each semester, students receive a final grade that represents an evaluation of the student's work and achievement during a semester's attendance in a course. All students are required to take comprehensive final examinations, one to two hours in length. The college *Catalog* lists final examination schedules, from which instructors must not deviate.

A - Excellent

B - Good

C - Satisfactory

D - Below Average

F - Failure

I - Incomplete

WP - Withdrew Passing

WF - Withdrew Failing

An "I" is a temporary grade which may be given at the end of the semester only when illness or other unavoidable reasons prevent the student from taking the final examination or completing the course on time. An individual student has the responsibility of making the necessary arrangements with the instructor to remove the incomplete within the first regular semester that follows the recording of the "I," or it will automatically become an "F."

Quality Points

To graduate from Southwest Mississippi Community College, academic students must receive a minimum of 124 (for 62 hours earned) quality points, which are determined by semester grades and calculated as follows:

GRADE	QUALITY POINTS PER SEMESTER HOUR
A	4
B	3
C	2
D	1
F	0

Student Attendance

A student who enrolls in a class accepts responsibility for attending that class and for completing the work assigned.

The college excuses absences under three circumstances: hospitalization of the student, death in the student's immediate family, or participation by the student in a school-sponsored activity.

A student whose absence is excused by the college will be allowed to make up any work missed during that excused absence, but only if the student notifies the instructor of the situation on the day of the student's return to class.

When a student's absences (whether excused or not) exceed the equivalent of two weeks of the scheduled meetings for a class, that student may be dropped from that class. If this action happens after the deadline for dropping the class without penalty, that student will receive a grade of "F" for that class.

Being dropped from a class might reduce a student's status from full-time to part-time and thereby affect, among other things, that student's scholarships, financial aid, athletic eligibility, and eligibility to reside in the dormitories.

Schedule Changes (Change of Registration)

From time to time, students need to make changes to their schedules. The college website calendar has the last day to add a class and/or drop a course without a penalty. To change add or drop a class, a student should:

1. Consult with advisor.
2. Login to AccessSW and drop the class.

Syllabus Requirements

For each academic, career, and technical course, instructors must develop a comprehensive course syllabus which delineates and defines course content in a consequential manner, providing tie-ins with text, assignments, outside projects, tests, computer usage, science labs, and methods of teaching and student evaluation. As a preface to the syllabus and to be used as a student handout, the syllabus should contain the following items: (1) course title, (2) course number, (3) instructor's name, (4) course expected outcomes, (5) absentee policy, (6) homework policy, (7) materials needed, (8) texts, (9) test policy, (10) grade policy and scale, (11) office location and hours, (12) ADA statement, and (13) any other requirements, information, or policies that would be beneficial to the student taking this course.

Faculty should submit one copy of each syllabus to the Vice-President for Academic Affairs before the semester begins, so that a complete course description and a complete list of course requirements will be on file in the Vice-President's office. This will not only satisfy SACSCOC review requirements, but will also be invaluable when dealing with student problems in specific courses and assisting students that transfer to another college or university. A recommended course syllabus format follows.

RECOMMENDED COURSE SYLLABUS FORMAT

- I. COURSE NUMBER AND TITLE
 - A. The semester the course is taught, first or second or first and/or second
 - B. A description of the course as it appears in the college *Catalog* including pre- or co-requisites
 - C. Instructor's name
 1. Location of office (building and room number)
 2. Office phone number
 3. Office hours
 - D. A list of materials required for the course
 1. Text book (include title, author, publisher, edition, etc.)
 2. Workbooks
 3. Other materials
- II. GENERAL EDUCATIONAL OUTCOMES
 - A. General educational goal statement (This should be the same for all sections of the same course and should be identified by a consensus of all faculty who teach the course.)
 - B. General education outcome statements
- III. OTHER COURSE/DISCIPLINE GOALS

This section is more individualized, allowing for differences in the emphasis used by the various faculty teaching the same course.

- A. Other goal statements
- B. Other outcome statements

IV. METHODS OF ASSESSMENT

The methods of assessment or measures used to provide evidence of a student's success should be identified in this section. It should include the various methods used by the instructor to determine the student's grade. Information should be included about the use of subjective and objective assessment techniques (i.e., written examinations, oral examinations, laboratory work, daily assignments, classroom participation, etc.).

V. POLICIES AND PROCEDURES

A. Grading

All policies relating to grading should be included here (ie, grading scale, how grades are calculated, grades that can and cannot be earned, etc.).

B. Attendance

Policies on absences of all kinds should be included here (ie, excused absences, illness, weather policy, etc.).

C. Assignments

The policy on assignments that are turned in late should be included here.

D. Make-up work/exams

Dates of exams, missed exams, and policy on making up missed work

E. Cheating/student conduct

Faculty may want to include specific information on cheating and conduct (dress code) or refer to these policies on cheating in the student handbook.

F. Withdrawal

Faculty may want to outline the process and procedures of withdrawal here.

G. Other (copyright laws, plagiarism, etc.)

VI. TOPICAL OUTLINE

This section of the syllabus should include a complete topical outline of the material covered in the course. The information may be as general or as specific as the faculty member wishes, but at a minimum should provide the student with an overview of the course content. A calendar of scheduled topics and of teaching methodologies (lecture and lab) may be included.

VII. ASSIGNMENTS

The faculty may or may not wish to include a detailed section of course assignments. However, this section should include information on work that will require additional time such as labs, field trips, etc., and possible expenses beyond the cost of the textbook - Also acquiring extra credit.

VIII. OTHER (OPTIONAL)

This section is to be used for individual preferences on bibliographies, a sample test, outside resources, Library-Learning Resources Center information, etc., and a copy of the course final examination.

Withdrawals

Unfortunately, situations arise that necessitate a student's withdrawal. If a student withdraws prior to the date (known as the drop date) contained on the college calendar, the record will show a "W" for withdrawal. If the student withdraws after this date, the

transcript will show a "WP" or a "WF" for each course, depending upon whether the grade was passing or failing at midterm.

To withdraw officially from the college, the student must secure a formal withdrawal form from the counselor's office, obtain the necessary signatures, and return the form to the business office. Failure to abide by this regulation will forfeit the student's right to any refund due from the college and may result in failing grades in all subjects, which become part of the student's permanent academic record of the college.

Evaluations

The college conducts an annual evaluation, based on the performance of the duties and responsibilities as outlined in this document, of all faculty in the spring semester of the academic year. Although all faculty are evaluated each spring semester, new faculty are evaluated the first semester they teach.

Students and division chairs evaluate faculty; the Vice-President for Academic Affairs evaluates the division chairs. Some divisions may conduct additional evaluations to maintain compliance with specific state and national regulatory or accrediting agencies, and individual instructors may conduct their own evaluations within the classroom.

The college administers faculty evaluations as a feedback mechanism for self-improvement, to document institutional effectiveness, and to plan faculty development activities for the improvement of the educational program. The evaluative instrument is subject to periodic revision through faculty or administrative input. Written recommendations by the faculty are submitted to the appropriate administrator (Vice-President for Academic Affairs or Vice-President for Career and Technical Education), and results of the evaluations are available to each instructor online.

Student Evaluation of Faculty

The appropriate administrator (Vice-President for Academic Affairs or Vice-President for Career and Technical Education) administers and collects the evaluation in the appropriate classrooms or through electronic access. The appropriate administrator (Vice-President for Academic Affairs or Vice-President for Career and Technical Education) reviews, either verbally or in writing, the findings with each faculty member. Any faculty member who makes a score less than 4.0 on any item of the evaluation must provide, prior to the beginning of the next academic year, the division chair and the appropriate administrator (Vice-President for Academic Affairs or Vice-President for Career and Technical Education) with a written plan for improvement.

Faculty (division chairs/faculty) Evaluations

The Vice-President for Academic Affairs administers the evaluation of the division chairs, and the division chairs administer the evaluation of that division's faculty. The appropriate administrator (Vice-President for Academic Affairs or Vice-President for Career and Technical Education) and/or division chairs review, either verbally or in writing, the findings with each faculty member. Any faculty member and/or division chair who receives a rating of N (needs improvement) is responsible for discussing plans for improvement with the division chair or the appropriate administrator (Vice-President for Academic Affairs or Vice-President for Career and Technical Education) where appropriate, and all U

(unsatisfactory) ratings require a written plan containing methods for improvement, submitted before the end of the semester in which they were evaluated. Excessive items marked with N or U will result in a probationary contract for the next year. Failure to improve during a probationary year will result in non-renewal of contract.

Other Employee Evaluations

Other employees, including administrators, are evaluated yearly. The employee is asked to review and sign the evaluation. The evaluation form also includes an area for employee response to the evaluation.

CLASSROOM POLICIES

Decorum

Students enrolled at the college assume the responsibility for adhering to the rules and regulations found in the current *Student Handbook*, which details policies regarding dress, headwear, appropriate language, tobacco products, drugs, firearms, and general conduct. Faculty members are responsible for enforcing these policies.

Visitors and Guests

Due to the college's liability insurance regulations, no instructor should allow any student to bring children or other minors to any class, day or night. In addition to being a liability, it is a distraction to other students to allow children in the classroom during instruction. The liability of any child that is brought into a classroom rests with the instructor if the instructor allows the child to remain in the classroom against college policy.

In terms of guest speakers, instructors who wish to invite guest speakers to the campus or their classroom should carefully review items of discussion with the speaker.

SCHEDULE OF CLASS MEETINGS

Regular Schedule

Daily classes, Monday through Friday, meet according to the schedule listed in the *Catalog*.

Assembly Day Schedule

Periodically throughout the semester, the college has assembly meetings. During these days, classes meet according to the assembly day schedule listed in the *Catalog*. All assembly meetings are held in the Hurst auditorium of the Fine Arts Building, unless stated otherwise.

EVENING SCHOOL POLICY

The college offers academic and career-technical evening classes whenever a sufficient number of people indicate a class is needed and a qualified instructor can be employed. The following procedures apply to evening classes:

- Office hours are to be maintained by full-time and part-time instructors, allowing fifteen minutes before and fifteen minutes after each class for consultations with students.
- Each instructor will meet classes for the required period of time. Any deviation from class or examination schedules must be approved by the appropriate administrator (Vice-President for Academic Affairs or Vice-President for Career and Technical Education).
- Each instructor will be required to complete all forms and reports as required by the college.
- Evening class instructors will be paid at a rate determined by the college.

SUMMER SCHOOL POLICY

The college holds an eight-week summer school divided into two semesters of four weeks each or one semester of eight weeks.

Summer school salaries are based on the total semester credit hours taught.

GRADUATION

All faculty should encourage students to complete a degree or certificate program in order to graduate from Southwest Mississippi Community College. Therefore, faculty should keep abreast of all requirements for graduation listed in the current college *Catalog* and inform students of important deadlines pertaining to graduation.

Application for Graduation

An application for graduation should be submitted to the Registrar's Office within one week after the last day to add full-term classes for the semester of graduation.

A student may make application for graduation under provisions of the current catalog or the catalog under which he/she entered Southwest Mississippi Community College, provided that catalog is dated no more than two years prior to the expected graduation and current statutes, rules, regulations, policies, or procedures permit.

Intellectual Property Rights

Southwest Mississippi Community College maintains rights to intellectual property created at college expense. The college reserves rights of ownership of all intellectual property including, but not limited to, curricular materials, books, web pages, electronic publications, and programs written or otherwise created by a student, instructor, or staff member while using college materials or equipment and while working during time that is compensated by the college. All classes of intellectual property, scientific and technological developments, materials or objects created or produced by a faculty or staff member on personal time without the assistance of SMCC resources, personnel, equipment, materials, or facilities, shall be the exclusive property of the individual.

DISTANCE LEARNING

Southwest Mississippi Community College is committed to protecting the privacy of all students, whether they attend class on campus or are enrolled in distance learning programs. As a condition of retaining its regional accreditation with SACSCOC, SMCC is required to have a written procedure for protecting the privacy of students enrolled in distance and correspondence education courses and programs.

SMCC Policy and Procedure

To protect the privacy of all students, including distance learning students, SMCC complies with the Family Educational Rights and Privacy Act (FERPA) of 1974, as published in both the Course Catalog and the Student Handbook.

At the time of initial registration, all SMCC students are issued a unique student identification number. This student ID becomes the unique identifier for the student throughout his or her academic career at SMCC. The student ID differs from the student's social security number, which is never used for academic activity, either online or in-person. Instructions for logging into Canvas are sent to students once they complete registration every semester.

The student ID, along with a unique password, is required to access all college resources including Access Southwest, which is the SMCC web-based information system that students, including students enrolled in distance education courses, use for course registration and to access grades, textbook information, financial information, personal directory information, and more.

Students who enroll in distance learning courses at SMCC access the learning environment through a learning management system (LMS) called Canvas. A learning management system is a set of software tools that provides an online environment for course interactions.

Students initially access Canvas using their student ID and temporary password. This information is sent only to the mailing and email addresses the student either submitted when submitting an application for admission or updated either in person (showing a photo ID) or in Access Southwest. The student is allowed access to the coursework only after the registration process is complete. The student can only access the course by using their student ID and password. Each time the student enters the course, the ID and password must be verified.

While in Canvas, faculty are restricted to accessing information within the courses that they teach and students are restricted to faculty-published information in the courses in which they are enrolled. Canvas also provides a messaging system that is internal to Canvas and is the preferred method of communication among instructors and students. Students decide how they will receive these messages, text message and/or e-mail, and choose the phone number or e-mail address for Canvas to use.

In the secure environment of Canvas, faculty members may post course materials, assignments and exams, and discussion forums for their courses, and where students may participate in forum discussions, upload assignments, and take quizzes and exams. The privacy of individual students' assignments and grades is maintained within the learning management system.

GENERATIVE ARTIFICIAL INTELLIGENCE

Southwest Mississippi Community College faculty and staff are allowed to use Generative Artificial Intelligence in ways that are consistent with furthering the mission and goals of the college. Faculty and staff who chose to use Generative Artificial Intelligence are responsible for the accuracy and appropriateness of any generated content.

The use of confidential data with publicly available Generative Artificial Intelligence tools is prohibited. This includes but is not limited to personally identifiable employee data, FERPA-covered student data, and HIPAA-covered patient data.

The use of Generative Artificial Intelligence in the classroom and for academic work is at the discretion of the individual instructor. Instructors have the options of allowing use, permitting certain use, or prohibiting use in their courses. Guidelines for acceptable and unacceptable use, as well as consequences for misuse, will be clearly stated in the instructor's syllabus.

Before using Generative Artificial Intelligence for academic purposes, students should consult the syllabus of each course to determine acceptable and unacceptable use of Generative Artificial Intelligence for that course. Any attempt by a student to submit content generated by artificial intelligence as their own work without proper citation will be considered plagiarism.

SECTION 5 – FINANCIAL SERVICES

Southwest Mississippi Community College maintains adequate funding to support and ensure quality education and services for its constituents. Demonstrating their commitment to excellence, the college seeks faculty input in determining budgetary needs to support its diversified programs. Therefore, Section 5 of the *Faculty Handbook* addresses the purchasing process, external grants, campus solicitation, and fund raising practices.

EXTERNAL GRANTS/CONTRACTS

Rather than making internal purchasing requests, faculty may seek funding from external means. However, externally funded grants and contracts must support the mission and goals of the college. All college personnel shall submit grants and contracts in accordance with the college organizational chart for approval. Final approval rests with the President and the chief fiscal officer. The college has fiscal authority over all grants and contracts secured by college personnel.

CAMPUS SOLICITATION AND FUND RAISING

Some student organizations solicit support for their programs through approved fundraisers. Private business or solicitation may not be conducted on the college premises, residence halls, or academic/administrative buildings except when a student organization has requested a particular service and when such service is directly relevant to the purpose of that organization.

Campus solicitation includes selling of goods or services, political activities, posters, handouts, and unrecognized group membership canvas. This definition applies to activities by any on-campus or off-campus individual or group.

Requests for organizational fundraisers must be directed to the Vice-President for Student Affairs and must meet the following conditions:

- Activities do not conflict with the educational purpose of the college
- No disruption of traffic when either a vehicle or pedestrian is involved
- No door-to-door solicitation is permitted in residence halls, academic, or administrative buildings.
- Funds derived from activities must be used for purposes consistent with the goals of the organization.
- Campus mail may not be used for political or religious information or fund-raising.
- Requests must be approved forty-eight (48) hours in advance of activity.
- Activities held outside on campus grounds or premises must be restricted to a specified and acceptable area.
- Appropriate legal action may be taken against individuals and non-college affiliates refusing to comply with regulations.

Student organizations must obtain approval from the Vice-President for Student Affairs and complete a Fund Raising Activity Form prior to any fund raising activity and must also establish an account with the business office. All proceeds derived must be deposited in that account and expended in a manner consistent with the expenditure of other college funds and in accordance with state purchasing law.

SECTION 6 -- INSTITUTIONAL SUPPORT SERVICES

In an effort to meet the diverse needs of its district population, Southwest Mississippi Community College provides facilities and services that support the cultural, educational, and economic needs and interests of its students and community. Additionally, the college offers students guidance and counseling services to ensure their academic and social success. Not only does the college commit itself to its current enrollment, but it also promotes continued education and training for the workforce and community at large. Therefore, Section 6 of the *Faculty Handbook* lists the many support services the college offers.

WORKFORCE CENTER

The Workforce Center provides a variety of services to individuals wanting to improve their personal, business, and workforce opportunities and to businesses and industries wanting to improve the skills of their workers through education and training. Customized training programs are usually job specific, short-term, and non-credit in nature, and they can be conducted on campus or in the workplace.

Located in the Regional Workforce Training Center, the Workforce Center offers services from 8:00 a.m.-4:30 p.m., Monday through Friday or by arrangement. Specific programs found within the Workforce Center are Industrial Services, Workforce/Basic Skills/ABE/GED, and the Institute for Learning in Retirement.

COUNSELING

College counselors provide educational, vocational, and personal counseling. The academic counselors, who primarily assist students in college-transfer programs, are located in Kenna Hall. The career-technical counselor, whose office is in the H. T. Huddleston Building, assists students in the career-technical programs.

FOOD SERVICES

Cafeteria

The college cafeteria serves meals at regular hours and posts scheduled mealtimes in the dining hall at the beginning of each semester. Personal visitors or guests who eat in the cafeteria either pay for their meal or have it paid for by the faculty member or administrator who invited the individual. Meals are served during the following hours:

Monday - Friday

Breakfast	7:00 a.m. - 8:30 a.m.
Lunch	11:00 a.m. - 1:15 p.m.
Dinner	5:00 p.m. - 6:30 p.m.

Saturday

Brunch	9:00 a.m. - 10:00 a.m.
Dinner	4:00 p.m. - 5:00 p.m.

Sunday

Lunch	11:00 a.m. - 1:30 p.m.
Dinner	4:00 p.m. - 5:00 p.m.

Grill

The grill, located in the Student Recreation Building, gives students another option for campus dining. Open to students, faculty, and the public from 11:00 a.m. to 9:30 p.m. on Mondays – Thursdays and from 11:00 a.m. to 1:00 p.m. on Fridays during the academic year, the grill serves a variety of short order items.

LIBRARY-LEARNING RESOURCES CENTER

The college supports the Library-Learning Resources Center, which serves the citizens of its district by providing resources and services that will support their educational needs and interests. Access to information is provided through print, media, computer-assisted instruction materials, and telecommunication technologies. Southwest participates in an online cooperative that allows students 24/7 access to a librarian.

Library Hours

	REGULAR SESSION HOURS
Monday	8:00 a.m. – 6:00 p.m.
Tuesday	8:00 a.m. – 6:00 p.m.
Wednesday	8:00 a.m. – 6:00 p.m.
Thursday	8:00 a.m. – 6:00 p.m.
Friday	8:00 a.m. – 3:00 p.m.

Services

The library utilizes an automated library system, provides Internet access to MAGNOLIA (a collection of databases for research purposes), subscribes to over 200 periodicals, contains a 32,000 volume book collection with 4,000 non-profit items, and includes a special collection of Mississippiana housed in the Mississippi Room. Six study rooms for group study and audiovisual facilities are available to students. The Student Success Center, located at the west end of the library, houses approximately 20 computers that provide patrons with software to enhance curriculum, Internet access to MAGNOLIA, and Microsoft Office software.

Library Use

Library books, except reference and reserve books, circulate for a period of two weeks during the regular academic year and for a period of one week during the summer session. Only college students are allowed to check out these books, which may be renewed one time. Reference books and periodicals are to be used only in the library.

Photocopying is available in the library.

If the college library does not have specific, needed materials, it is possible to obtain materials from other libraries through the Interlibrary Loan. However, there may be a fee for these services.

Library Rules

While using the services of the Library-Learning Resources Center, patrons should maintain an atmosphere conducive to quiet study. The library honors and enforces all established college rules and regulations. Thus improper dress, eating, drinking, and using

tobacco products are not permitted. Students who persist in violating the rights of others by not carrying out the above regulations, shall be prohibited from using the library.

Library Fines and Fees

The library assesses a fine of ten cents a day for each overdue library book and a fine of ten cents per hour for each overdue reserve book. All overdue books must be turned in and fines paid before taking final exams.

SECURITY

The college endeavors to provide a secure environment, which fosters an atmosphere conducive to learning. By dialing "3838" from a campus phone, faculty and students receive assistance from security in any emergency situation. In the event of an electrical power failure, dial "8-911" and the Pike County Sheriff's department will contact the college security through radio communication.

STUDENTS

Due Process (Student Complaint Procedure)

The college has an administrative procedure in place, which is designed to receive, investigate, and resolve student complaints, whether academic or nonacademic. Any student who wishes to make a formal complaint regarding a college program, service, employee, or any other individual or aspect must take the following steps:

1. Discuss the problem with the faculty member, staff member, or administrator involved and/or use existing appeals committees where available prior to initiating formal complaint procedures under this policy. Students who fail to use existing appeals committees will forfeit their right to future due process. If informal efforts are not productive or appropriate in resolving the complaint, the student proceeds to steps 2 and 3.
2. Contact the Vice-President for Student Affairs, College Drive, Summit, MS 39666.
3. Express, in writing, the nature of the complaint and pertinent information to the appropriate person.

The college representative receiving the complaint will either handle the complaint personally or will refer it to the appropriate person for disposition. A response will be made to the student within fifteen (15) working days. Students who are not satisfied with the resolution of the investigating officer shall have the right to appeal to a grievance committee appointed by the college President. This appointed committee consists of two administrators, two faculty (not directly involved in the alleged problem), two students, and the original investigating official. The decision of the grievance committee is considered final.

No adverse action will be taken against a student for filing a complaint.

Satisfactory Progress for Receiving Financial Aid

Students receiving financial aid must meet minimum academic standards to continue receiving financial aid. The Satisfactory Academic Progress Policy is listed in the *Catalog* and on the college's website.

Health Services

The college provides first aid and limited health care to students, faculty, and staff during the school day. It maintains a favorable working relationship with the local physicians, dentists, and the hospital, located about four miles from the college with easy access to the campus. After regular business hours, residence hall students should report to the Residence Hall Director. The college is not responsible for any charges incurred by a student at a hospital or health care provider.

The college reserves the right to notify parents, guardians, and/or spouses in the case of the illness of any student when, in the professional opinion of the President, Vice-President for Student Affairs, and/or any other employee, these individuals should be notified.

Student Assistants

To the extent possible, the college employs students as library workers, laboratory assistants, cafeteria workers, and secretarial and clerical assistants. To obtain an available student assistant, faculty members must submit a formal request and job description to the Financial Aid Director.

Pell Grants are available to students who qualify on the basis of need. The Free Application for Federal Student Aid (FAFSA), available online is the application for work and grants.

Student Recruitment

Through the office of the Vice-President for Student Affairs, academic and career-technical counselors coordinate all recruitment activities for the college. These activities consist of high school visits, campus tours, and communication with prospective students. The counselors inform the faculty of scheduled visits and actively enlist their assistance. Students from the various departments also accompany the counselors and faculty on these trips.

Student Dress Code

An established, adopted dress code, published in the *Student Handbook*, exists for students. The faculty is responsible for ensuring that students in the classroom observe the policies stated in the *Student Handbook* regarding student attire.

Student Organizations

The college supports student organizations that foster intellectual and social growth. To enhance a student's educational experience and involvement, faculty should encourage students to participate in campus organizations.

Bear Trackers

To assist with recruitment and public relations activities, a select group of Southwest Mississippi Community College students become SMCC Bear Trackers. In recommending students for membership, faculty members consider each nominee's academic record, participation in college activities, and willingness and enthusiasm to represent the college in a positive manner.

Functioning as ambassadors, SMCC Bear Trackers lead campus tours, assist with campus meetings or functions, and accompany counselors on high school visits to promote the college.

Collegiate DECA

Collegiate DECA, an organization active in the college's Career-Technical division, operates through the nation's schools to attract students to careers in marketing, merchandising, and management. Collegiate DECA strives to further education that will contribute to occupational competence and will promote an understanding of the responsibilities of our competitive free-enterprise system.

Phi Theta Kappa (PTK)

Chartered in the spring of 1966, the Omicron Delta Chapter of Phi Theta Kappa (PTK), a national honorary community college fraternity, offers membership to college students achieving and maintaining high academic standing. To be admitted into Phi Theta Kappa, a student must be enrolled in fifteen academic hours and have attained an over-all GPA of 3.50. To continue in the fraternity, the student must maintain a 3.00 GPA. Certain senior colleges and universities will honor community college graduates who are members of Phi Theta Kappa with a scholarship.

Student Government Association (SGA)

All regularly enrolled full-time students of Southwest Mississippi Community College are members of the Student Government Association (SGA). A student council, composed of four student government officers, four sophomore class officers, four freshman class officers, and the Vice-President for Student Affairs, is charged with directing the activities of the SGA. The purpose of this association is to bring about a closer understanding between students and faculty, to sponsor social activities, to encourage scholarship, leadership, and citizenship, and to contribute to the betterment of the college and its educational program.

Student Nurses Organization (SNO)

Guided by faculty sponsors, SNO members plan a variety of activities, and monthly meetings are held with interesting agendas. In addition, SNO sponsors a variety of

community projects which may include blood pressure screenings, pantry donations to McComb Interdenominational Care Association (MICA), gifts for Christmas House at Mississippi State Hospital (MSH), and participation in Relay for Life (American Cancer Society).

SNO members are represented at state and national conventions held each year. This allows college nursing students to enjoy networking with other nursing students, which assists in the development of their becoming a nursing professional.

Religious Groups

The college supports the organizations that seek to meet the spiritual needs of its students. Although the campus religious groups represent the Baptist and Methodist denominations, all students are welcome to attend and participate in their weekly activities.

Baptist Student Union (BSU)

The work of the Baptist Student Union (BSU) is carried out through a BSU Council, elected by the Baptist students, and a full-time director, provided by the local Baptist churches of the college district.

Wesley Foundation

The Wesley Foundation, a campus organization for Methodist students, is affiliated with local Methodist churches and is directed by a local Methodist minister.

Student-Related Publications

The college affords students an opportunity to participate in the publication of two college documents – *The Pine Burr* and *Whispering Pines*. Although students play no role in producing the *Student Handbook*, the handbook contains current information pertinent to college students.

Student Handbook

Serving as an official college document, the *Student Handbook* is a publication, published yearly by the institution that includes regulations and general information to acquaint the student with various phases of campus life. Each student receives a copy at registration or may request one from the Vice-President for Student Affairs. The student is responsible for becoming familiar with this handbook and for abiding by its guidelines.

The Pine Burr

The Pine Burr is a monthly student newspaper published by students under the direction of a faculty member. Staff membership allows staffers an opportunity to exercise journalistic skills and to express student opinion.

Whispering Pines

The *Whispering Pines* is the college yearbook, published each year with faculty guidance, by students who have shown an interest in and demonstrated ability for journalistic creativity and publication.

SECTION 7 -- PHYSICAL PLANT

The physical environment at Southwest Mississippi Community College supports its educational endeavors. In addition to renovations, expansions, and routine maintenance, the college furnishes its faculty with the necessary equipment to enhance classroom instruction. Therefore, Section 7 of the *Faculty Handbook* outlines specific procedures for the acquisition, use, maintenance, and security of college property.

PROPERTY AND MANAGEMENT CONTROL

Southwest Mississippi Community College may acquire, maintain, protect, use, and dispose of property acquired to perform its mission. college property and resources may be used only for college business. For the purpose of this policy, property is defined as moveable items such as equipment costing over \$500 with a useful life of more than one year.

College property must be managed according to college policies and applicable to state and federal laws, including Section 31-7-13, Mississippi Code of 1972, Amended; Office of Management and Budget Circular A-110 Attachments N and O; and OMB Circular A-21.

College property includes equipment purchased by college departments, regardless of the source of funds used to purchase the equipment; state-owned equipment used by college departments; components and material used to make equipment, whether furnished to, acquired by, or fabricated by the college; and property donated to the college.

College property is in the custody of the department that purchased or is using the property. The department is responsible for the management and control of its assigned property. The dean, division chair, director, or department head assumes the responsibility for initiating requests to acquire property; for ensuring proper use, maintenance, and security of assigned property; for maintaining inventory records on all property in the custody of the department; for reporting any shortage, damage, loss, or theft of property; and for disposing of college property in accordance with college policies.

Acquiring Property

All purchases of equipment are made according to college policies, and the State of Mississippi Procurement Code (Section 31-7-13, Mississippi Code of 1972, Amended).

All purchases involving federal funds must comply with the guidelines of the individual contract or grant and must be approved by the business office. The purchase of equipment must be necessary, in accordance with the terms of the contract or grant, and comply with U.S. Government regulations.

All gifts of equipment to the college must be reported to the business office. While the business office must process the execution of any formal acknowledgment forms, the department receiving the gift may and should express appreciation and gratitude for the gift. Property valued over \$500 will be added to the college Property Inventory.

Hazardous Materials

If hazardous or dangerous materials are needed for any purpose, the business office must be contacted before acquisition.

Use, Maintenance, and Security of Property

college departments who have custody of college property are responsible for its proper use, maintenance, and security. All property should be used for the purpose originally intended. Departments must take care of and properly maintain property to

ensure the longest useful life possible. All items should be maintained according to the manufacturers' recommendations or accepted standards. Suggested schedules of lubrication, cleaning, calibration, and inspection should be followed. If preventive maintenance is not required, the property should be maintained in a clean and orderly manner.

The location of each item of property is included in the college inventory records. Current location records must be maintained so that any item can be located for inspection or inventory purposes within a reasonable time. When property is temporarily idle or placed in storage, the department must provide adequate protection from damage or loss. Property must be protected when moved.

Departments should make adequate provisions for the physical security of the property in their custody. Areas containing equipment should be locked after business hours or at other times when not in use. Special precautions should be taken for high-value, portable items. Departments must immediately report the theft of any inventoried equipment to campus security and the business office. Campus security will complete an incident report and submit a copy to the business office. Unexplained disappearances and losses must also be reported to the business office. Every precaution must be taken to ensure the safekeeping of sensitive items (items which are susceptible to being taken for personal use or which can be readily converted to cash). Sensitive items must remain in a secure area when not in use.

Inventory Control and Reporting

The business office is responsible for overseeing the control of property assigned to college departments. The business office maintains inventory records, issues property tags to departments, and provides reports and information from equipment inventory records. It also maintains financial records on property. Departments must ensure property tags are on *all* inventoried property.

The business office maintains the college Inventory System, a database containing information on each item of property valued over \$500. This information includes the SMCC identification number (per property tag); name or description of item; manufacturer, model number, and serial number; reference number, account number used for purchase, and fund code; department name and location where equipment is assigned; acquisition and assigned date to current department (if different); cost; source of acquisition (vendor); and disposition record.

The accounts payable clerk notifies the Vice-President for Business Affairs when property has been purchased which meets the criteria for inclusion on the inventory. The Vice-President for Business Affairs forwards an inventory worksheet to the department for each specific item acquired. Property tags are included with worksheet, and the department is responsible for placing the tags on the item(s) in a location that is easily identifiable. The worksheet must be completed by the department and returned to the business office within thirty (30) days after its receipt. The worksheet will supply the business office with required information, such as location of equipment and serial numbers, which will assist in maintaining accurate inventory records. Departments may request assistance from the business office to affix property tags and complete the worksheet. A representative from the

business office will work with the department in inspecting the equipment, affixing the property tags, and recording all identifying information.

Each year, the business office will send to the department a listing of the department's equipment as currently reflected on the college Inventory. Instructions, a Request for Adjustment to Inventory/Request for Disposal of Surplus Equipment form, and a Certification Statement are also distributed. The Request for Adjustment to Inventory/Request for Disposal of Surplus Equipment form is used to report additions to or deletions from a department's inventory list. This form may also be used to request that property be tagged. Department administrators are responsible for completing a physical inventory and returning all forms to the business office by the designated deadline. The department should retain copies of inventory documents. Changes in a department's inventory should be reported to the business office as they occur throughout the year.

The business office uses the certified inventories to make adjustments and corrections to the inventory. The business office will remove from departmental annual inventories items unlocated for three (3) consecutive years and reclassify them as "unlocated" items. After two (2) additional years, college unlocated items will be carried as unlocated and written off the financial statements. Any equipment that is found in future inventories will resume normal status.

Disposition of Property

When an item of property is no longer useful to the department, it may be transferred to another college department, traded in on new equipment, or disposed of through the business office. The department that is transferring, trading in, or disposing of the property is responsible for completing a Request for Adjustment/Request for Disposal of Surplus Equipment form and submitting it to the Vice-President for Business Affairs. When equipment is transferred between college departments, no change is made in the recorded value of the equipment. The department transferring the equipment must report the transfer to the business office on a Request for Adjustment to Inventory/Request for Disposal of Surplus Equipment form.

If a department wishes to trade in an item of property on the purchase of a new item, the department should contact the Vice-President for Business Affairs for approval. The purchase requisition should identify the item to be traded in, including a full description, manufacturer, serial number, and college identification (per property tag). The department trading in the property must send a Request for Adjustment to Inventory/Request for Disposal of Surplus Equipment form to the business office. These procedures also apply to upgrades of equipment.

Property to be disposed of (not traded in on new equipment or transferred to another college department) must be sent to the business office. A department that has property that is not being used should complete a Request for Adjustment to Inventory/Request for Disposal of Surplus Equipment form and submit it to the Vice-President for Business Affairs. Arrangements will then be made to have the property stored until its disposal.

If hazardous or dangerous materials are to be sold after use, the Vice-President for Business Affairs must be consulted first.

DISPOSITION OF SMCC SURPLUS EQUIPMENT

This policy provides for the efficient, economical, and prudent management of surplus equipment. The business office is responsible for the reassignment of excess equipment and disposal of any surplus property. Every effort should be made to recycle usable equipment within the college. Departments are encouraged to use surplus property as the first source of supply and are further encouraged to support the reutilization program by continually reporting and disposing of all excess equipment.

Acquiring Surplus Equipment

All requests for surplus equipment must be directed to the business office. The Vice-President for Business Affairs is aware of the availability of surplus equipment and required procedures for the acquisition, control, and final disposition of surplus equipment.

Disposal of College Equipment

Departments with surplus or excess equipment may negotiate a transfer with another college department or request the business office to dispose of the equipment. To request removal of equipment, the department should complete a Request for Adjustment to Inventory/Request for Disposal of Surplus Equipment form. The business office will first offer the equipment to other college departments. If no internal transfer is obtained, the business office will dispose of the items through advertised solicitation of bids, periodic auction of surplus equipment, or disposal, if it is determined the property has no salvage value.

Departments transferring surplus equipment to other college departments must send a memorandum to the business office indicating a description of the item, the equipment identification number (property tag number), and the department to which the item is to be transferred. The memorandum should include signatures of both the transferring department head and that of the receiving department. The transferring department is also responsible for reporting the transfer to the business office on a Request for Adjustment to Inventory/Request for Disposal of Surplus Equipment form. This form serves to notify the business office to take the equipment off the transferring department's inventory and to add it to the receiving department's list.

Only the business office may sell surplus equipment off campus. The Board of Trustees must approve the disposal of any item appearing on the college Inventory System. Disposal methods comply with state statutes as described in Section 37-29-75, Mississippi Code 1972, Ann., and include sealed bids, public auction, and salvage. Sealed bid sales are advertised in a local newspaper for two consecutive weeks. Bids are opened seven working days after the last advertisement. All proceeds derived from the sale are returned to the college General Fund. Public auction sales are coordinated with an official auctioneer and are held approximately every six (6) months. The auction is conducted on campus. Notice of the auction will be placed in at least three (3) public places. The business office will also coordinate with the auctioneer in notifying interested parties of the auction. Under state law, if equipment cannot be sold through sealed bids or public auction, the Board of Trustees may declare the equipment to have no salvage value. The equipment can then be sold as scrap, recycled, or placed in a landfill.

SECTION 8 -- SPECIAL ACTIVITIES

Various ceremonies, events, and activities provided by Southwest Mississippi Community College require faculty participation and support. Therefore, Section 8 of the *Faculty Handbook* describes the faculty's role in athletic events, graduation, homecoming, and other various campus activities that occur throughout the academic year.

ADMISSION TO ATHLETIC EVENTS

Faculty, staff, and full-time students are admitted free to all college-sponsored athletic events held on campus, unless otherwise indicated. While in attendance at athletic and other events on campus, faculty and staff personnel are considered to be on-duty should an emergency or other need arise.

Faculty and staff may be called upon to sell tickets or otherwise assist with athletic or other events on campus. Efforts are made to rotate these obligations equitably among all available personnel.

GRADUATION

Graduation exercises for graduates are held at the end of the fall and spring semesters. All current faculty are assigned special committee duties and are expected to participate in committee duties and to attend graduation.

HOMECOMING

Homecoming is held each fall for current and former students and friends. All current faculty are assigned special committee duties and are expected to participate in committee work and to attend scheduled campus events.

OBSERVATORY

Located just west of the Regional Workforce Training Center, the college's observatory gives faculty and students a rare opportunity to examine the heavens. Southwest Mississippi Community College is one of the few Mississippi community colleges with an on-campus observatory. The dome houses a seven-inch refracting telescope, which is capable of providing magnificent views of the moon and planets as well as deep-sky phenomenon. Currently used in conjunction with classes in physical science and astronomy, the observatory is also open to the public by arrangement.